

750 Series - Floor & Overhead Closers

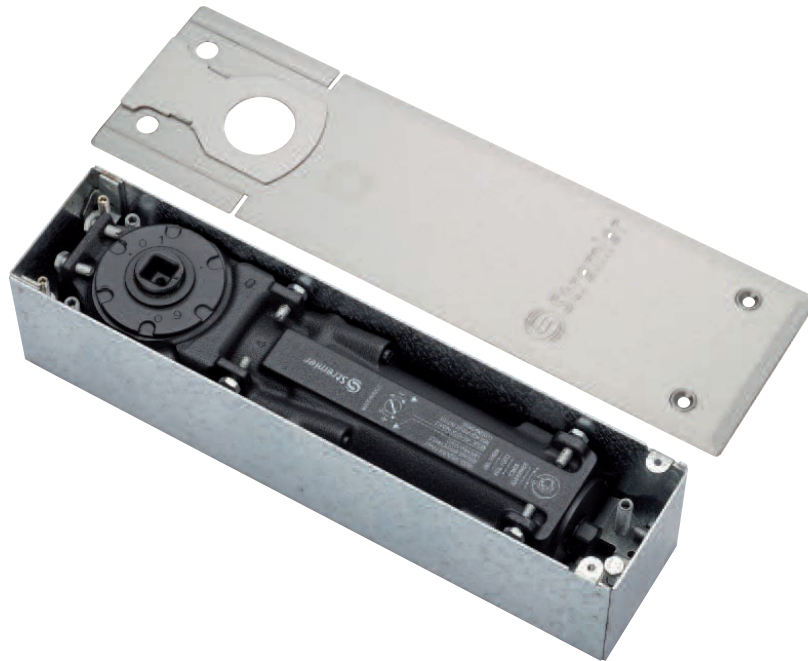
Floor springs 750 series

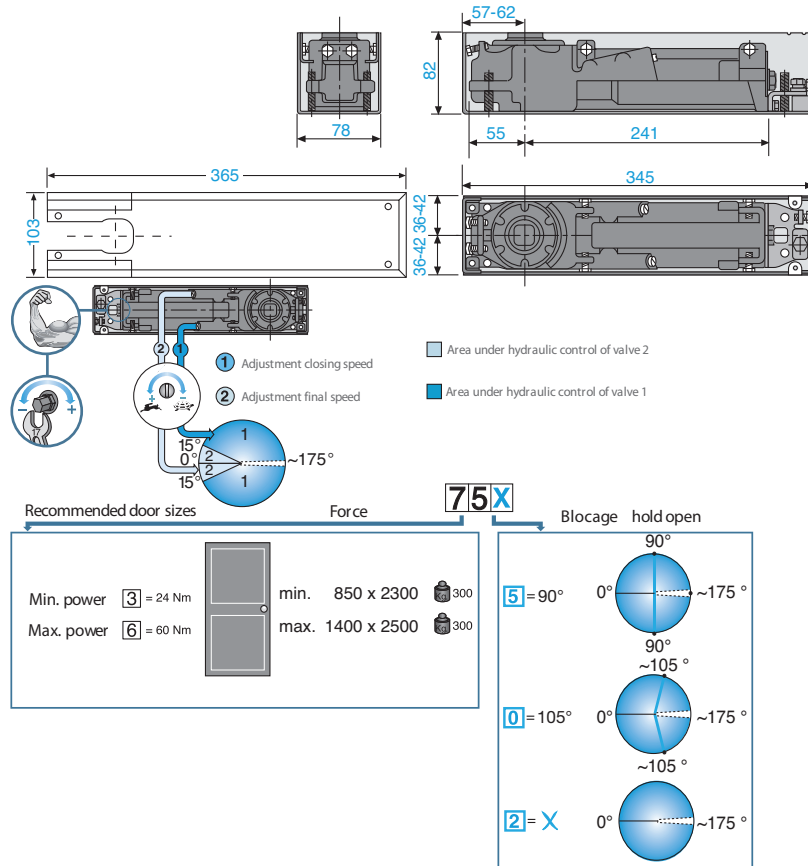
Technical features

- Adjustable force EN 3-6 (24-60 Nm)
- Recommended for large and very heavy doors up to 300 kg
- Variety of available spindles : French square, German rectangular, Italian square
- Hold open at 90°, 105° or no hold open
- Hydraulic control over 175° in both directions
- Two independent thermostatic valves for precise adjustment of general closing speed, final latch or final damping
- Back check effect
- Large range of adjustment body setting in the cementing box : Width 6 mm
Length 5 mm
Height 9 mm
- Cast iron body and cementing box in hot zinc plated steel

All models have quality certification EN1154.
Versions without hold open have CE conformity.

The floor springs are delivered complete with cementing box, body, spindle and cover plate.





References

	750	300	105°	Polished brass	Brushed stainless steel
F	Floor spring adjustable force 3 – 6 EN, French square spindle, hold open at 105°	750VF.00	750VF.15		
D	Floor spring adjustable force 2 – 4 EN, German rectangular spindle, hold open at 105°	750VD.00	750VD.15		
I	Floor spring adjustable force 2 – 4 EN, Italian square spindle, hold open at 105°	750VI.00	750VI.15		
	752	300	NO		
F	Floor spring adjustable force 3 – 6 EN, French square spindle, no hold open	752VF.00	752VF.15		
D	Floor spring adjustable force 3 – 6 EN, German rectangular spindle, no hold open	752VD.00	752VD.15		
I	Floor spring adjustable force 3 – 6 EN, Italian square spindle, no hold open	752VI.00	752VI.15		
	755	300	90°		
F	Floor spring adjustable force 3 – 6 EN, French square spindle, hold open at 90°	755VF.00	755VF.15		
D	Floor spring adjustable force 3 – 6 EN, German rectangular spindle, hold open at 90°	755VD.00	755VD.15		
I	Floor spring adjustable force 3 – 6 EN, Italian square spindle, hold open at 90°	755VI.00	755VI.15		