

7700 Series - Floor & Overhead Closers

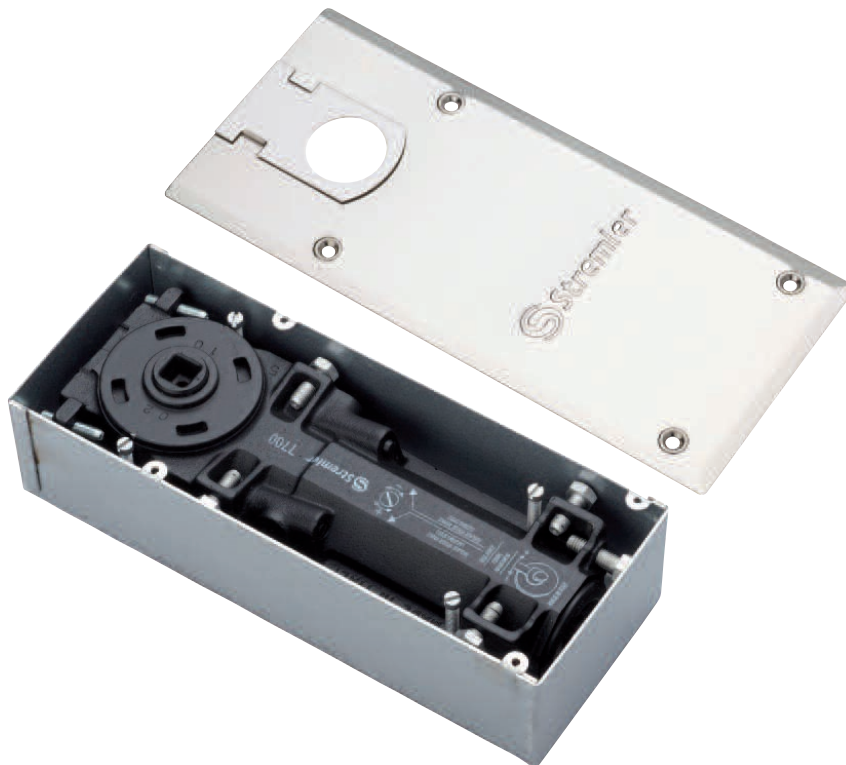
Floor springs 7700 series

Technical features

- Adjustable force EN 2-4 (14-28 Nm).
- Recommended for doors up to 170 kg.
- Variety of available spindles : French square, German rectangular, Italian square
- Hold open at 90°, 105° or no hold open
- Hydraulic control over 150° in both directions
- Two independent thermostatic valves for precise adjustment of general closing speed, final latch or final damping
- Back check effect
- Large range of adjustment body setting in the cementing box : Width 8 mm
Length 10 mm
Height 9 mm
- Cast iron body and cementing box in hot zinc plated steel

All models have quality certification EN1154.
Versions force EN3-4, without Hold Open, have CE conformity.

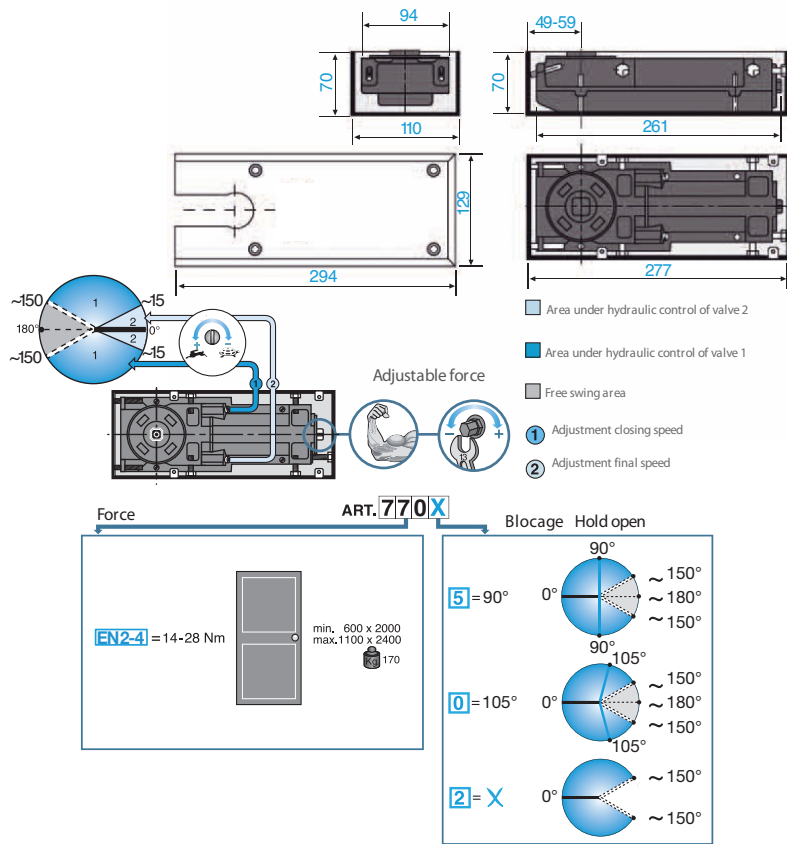
The floor springs are delivered complete with cementing box, body, spindle and cover plate.










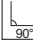
PREFIT

FITTINGS FOR GLASS

7700 Series - Floor & Overhead Closers



References

7700					
F	Floor spring adjustable force 2 – 4 EN, French square spindle, hold open at 105°			7700VF.00	7700VF.15
D	Floor spring adjustable force 2 – 4 EN, German rectangular spindle, hold open at 105°			7700VD.00	7700VD.15
I	Floor spring adjustable force 2 – 4 EN, Italian square spindle, hold open at 105°			7700VI.00	7700VI.15
7702					
F	Floor spring adjustable force 2 – 4 EN, French square spindle, no hold open			7702VF.00	7702VF.15
D	Floor spring adjustable force 2 – 4 EN, German rectangular spindle, no hold open			7702VD.00	7702VD.15
I	Floor spring adjustable force 2 – 4 EN, Italian square spindle, no hold open			7702VI.00	7702VI.15
7705					
F	Floor spring adjustable force 2 – 4 EN, French square spindle, hold open at 90°			7705VF.00	7705VF.15
D	Floor spring adjustable force 2 – 4 EN, German rectangular spindle, hold open at 90°			7705VD.00	7705VD.15
I	Floor spring adjustable force 2 – 4 EN, Italian square spindle, hold open at 90°			7705VI.00	7705VI.15