

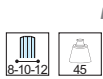
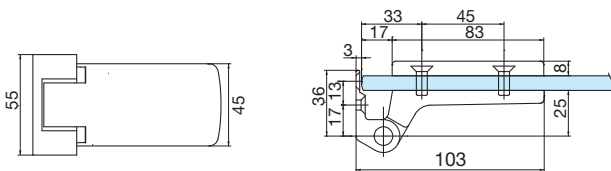
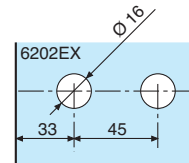
Bastille - Hinged Doors

BASTILLE

Technical features

- For 8, 10 and 12 mm thick toughened glass
- To fit notch 6202EX
- Max load 45 kg, maximum width 1000 mm, for 2 hinges please consult us for glass weighting more than 45 kg

4202



References

Hinge and multi rebate butt for all types of frame



Polished brass PVD



Bright chromium



Matt chromium



Stainless steel effect



Lacquered white RAL 9010

4202.05.0

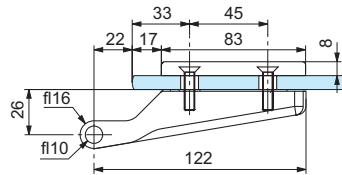
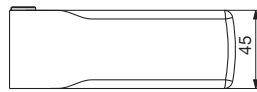
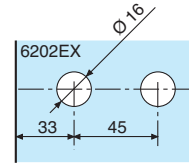
4202.30.0

4202.31.0

4202.35.0

4202.51.0

4206



References



Polished brass PVD



Bright chromium



Matt chromium



Stainless steel effect



Lacquered white RAL 9010

Hinge for rebate of 24 mm, to fit butts
4207 - 4208 - 4209

4206.05.0

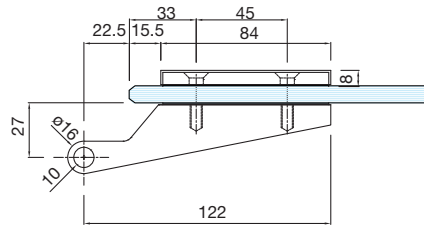
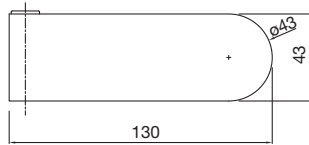
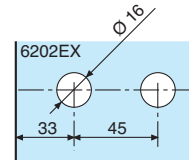
4206.30.0

4206.31.0

4206.35.0

4206.51.0

V505.2



References



Polished varnished brass



Brushed anodised alu silver



Brushed stainless steel



Brushed anodised alu.

Hinge for rebate of 24 mm, to fit butts
4207 - 4208 - 4209

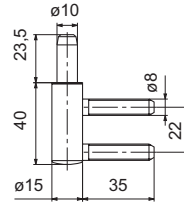
V505.2.01

V505.2.12

V505.2.15

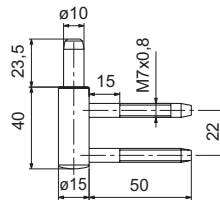
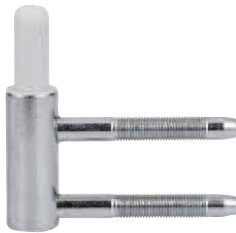
V505.2.36

4207.99.0



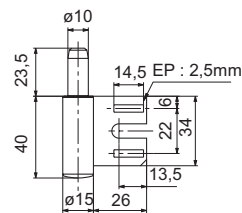
Butt for wooden door frame, to fit hinge 4206 and butt covers 4205

4208.99.0



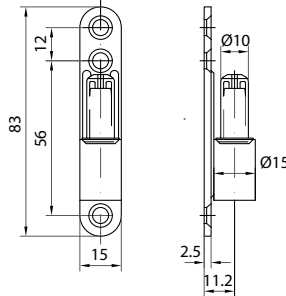
Butt for wooden door frame, to fit hinge 4206 and butt covers 4205

4209.99.0



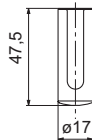
Butt for metal door frame, to fit hinge 4206 and butt covers 4205

K3172.90

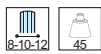


Reversible surface fixed butt for all types of wooden, metal and aluminium frame, to fit hinges 4206 - V505.2 and butt covers 4205 - V207

4205



References



Covers for butt 4207- 4208 - 4209



Polished brass PVD

4205.05.0



Bright chromium

4205.30.0



Matt chromium

4205.31.0



Stainless steel effect

4205.35.0



Lacquered white RAL 9010

4205.51.0