

End Caps and Welding Caps

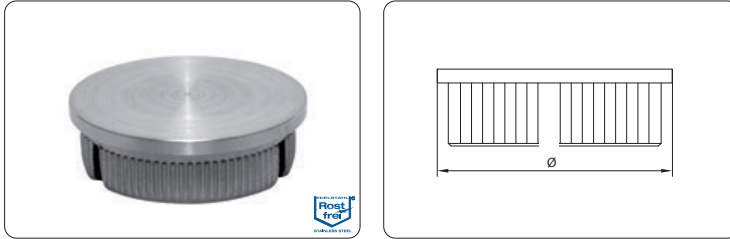


■ end caps and weldings caps

end caps and weldings caps

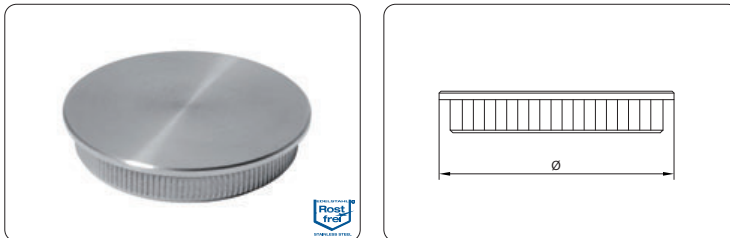


■ end cap flat, hollow

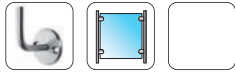


item no.	material	tube Ø	finish	
10200833A2	V2A (1.4301)	33,7 x 2,0	finish 240	2
10200842A2	V2A (1.4301)	42,4 x 2,0	finish 240	2
10200833A4	V4A	33,7 x 2,0	finish 240	2
10200842A4	V4A	42,4 x 2,0	finish 240	2

■ end cap flat, solid

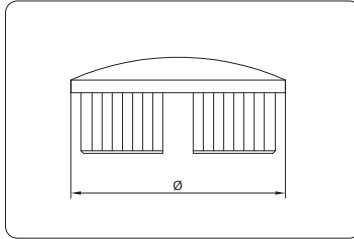


item no.	material	tube Ø	finish	
10200926A2	V2A (1.4301)	26,9 x 2,0	finish 240	2
10200933A2	V2A (1.4301)	33,7 x 2,0	finish 240	2
10200942A2	V2A (1.4301)	42,4 x 2,0	finish 240	2
10200948A2	V2A (1.4301)	48,3 x 2,0	finish 240	2
10200933A4	V4A	33,7 x 2,0	finish 240	2
10200942A4	V4A	42,4 x 2,0	finish 240	2



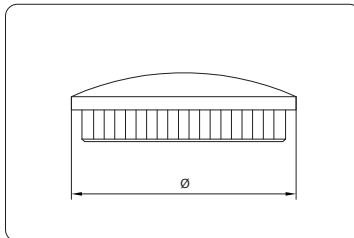
end caps and weldings caps

■ end cap oval, hollow



item no.	material	tube Ø	finish	
10201033A2	V2A (1.4301)	33,7 x 2,0	finish 240	2
10201042A2	V2A (1.4301)	42,4 x 2,0	finish 240	2
10201033A4	V4A	33,7 x 2,0	finish 240	2
10201042A4	V4A	42,4 x 2,0	finish 240	2

■ end cap oval, solid

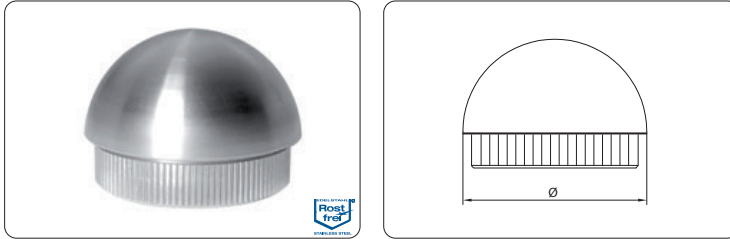


item no.	material	tube Ø	finish	
10201126A2	V2A (1.4301)	26,9 x 2,0	finish 240	2
10201133A2	V2A (1.4301)	33,7 x 2,0	finish 240	2
10201142A2	V2A (1.4301)	42,4 x 2,0	finish 240	2
10201148A2	V2A (1.4301)	48,3 x 2,0	finish 240	2
10201133A4	V4A	33,7 x 2,0	finish 240	2
10201142A4	V4A	42,4 x 2,0	finish 240	2

end caps and weldings caps

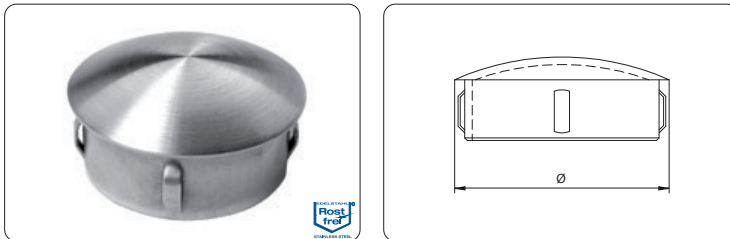


■ end cap round, solid



item no.	material	tube Ø	finish	
10201226A2	V2A (1.4301)	26,9 x 2,0	finish 240	2
10201233A2	V2A (1.4301)	33,7 x 2,0	finish 240	2
10201242A2	V2A (1.4301)	42,4 x 2,0	finish 240	2
10201248A2	V2A (1.4301)	48,3 x 2,0	finish 240	2

■ end cap oval, flexible, hollow

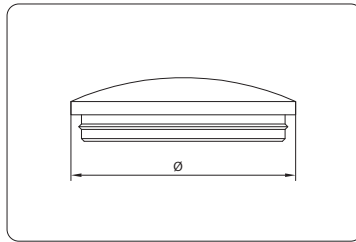


item no.	material	tube Ø	finish	
10201333A4	V4A	33,7 x 1,5 - 2,6	finish 240	2
10201342A4	V4A	42,4 x 1,5 - 2,6	finish 240	2
10201348A4	V4A	48,3 x 2,0 - 2,6	finish 240	2



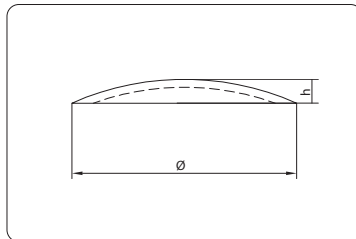
end caps and weldings caps

■ end cap oval with fin, solid



item no.	material	tube Ø	finish	
10201433A2	V2A (1.4301)	33,7 x 2,0	finish 240	2
10201442A2	V2A (1.4301)	42,4 x 2,0	finish 240	2
10201542A2	V2A (1.4301)	42,4 x 2,6	finish 240	2

■ end cap for welding oval



item no.	material	tube Ø	h	finish	
10201633A2	V2A (1.4301)	33,7	1,5	raw	4
10201642A2	V2A (1.4301)	42,4	1,5	raw	4
10201648A2	V2A (1.4301)	48,3	1,5	raw	4
10201660A2	V2A (1.4301)	60,3	2,5	raw	4