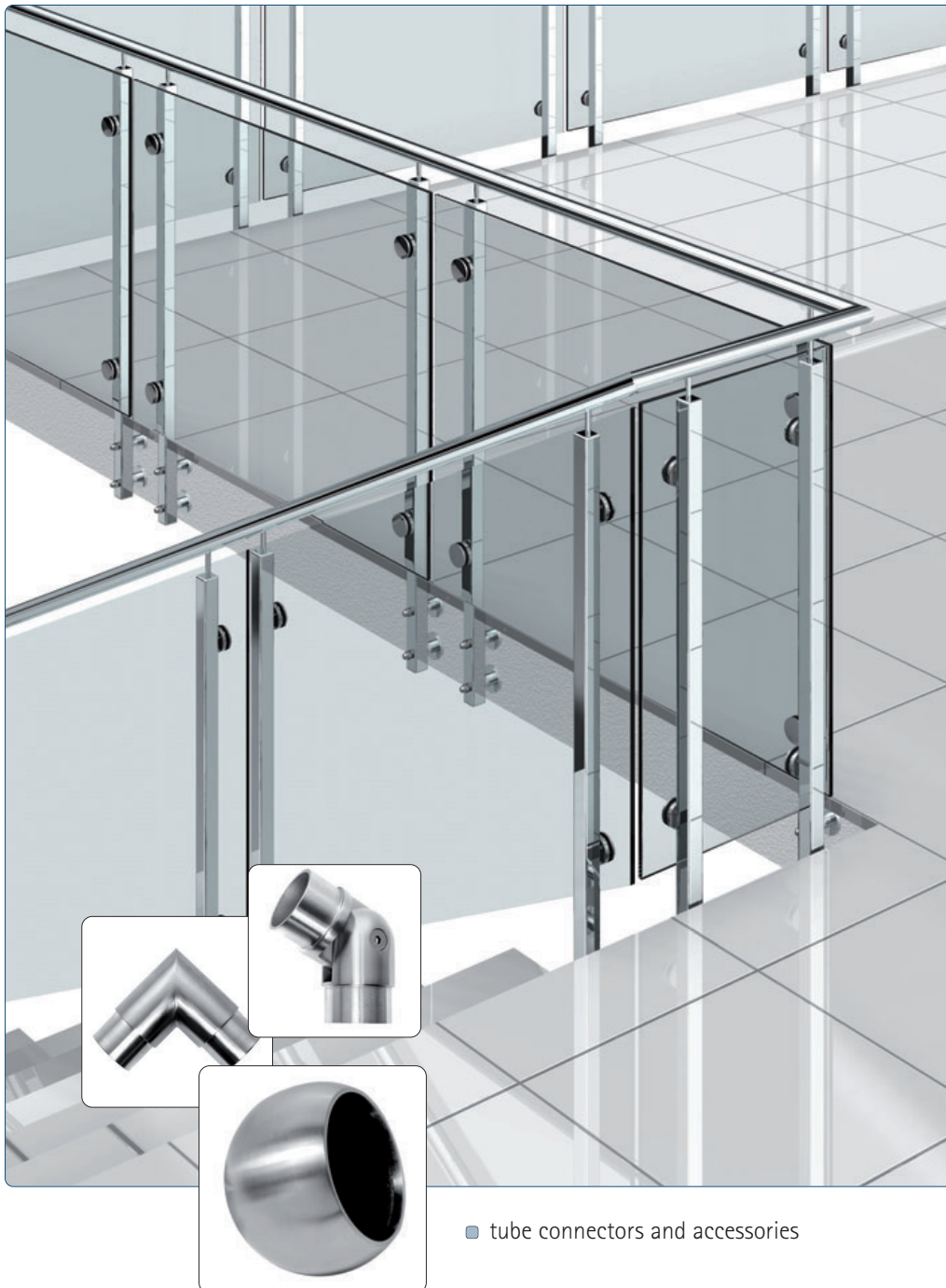
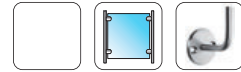


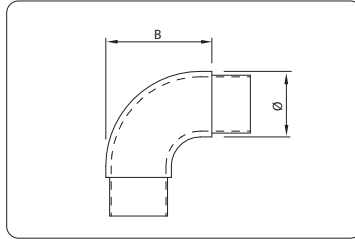
Tube Connectors and Accessories



tube connectors and accessories

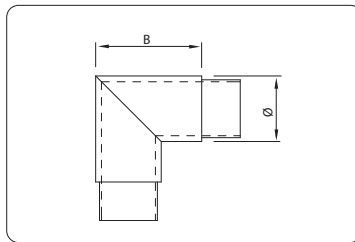


■ tube connector 90°, round



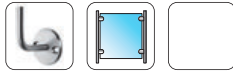
item no.	material	Ø	B	finish	
10206333A2	V2A (1.4301)	33,7 x 2,0	56	finish 320	2
10206342A2	V2A (1.4301)	42,4 x 2,0	64	finish 320	2
10206348A2	V2A (1.4301)	48,3 x 2,0	71	finish 320	2
10206333A4	V4A	33,7 x 2,0	56	finish 320	2
10206342A4	V4A	42,4 x 2,0	64	finish 320	2

■ tube connector 90°, square



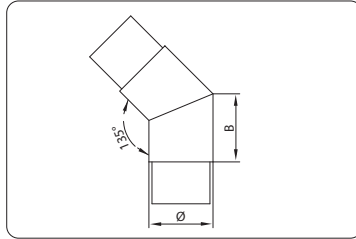
item no.	material	Ø	B	finish	
10206433A2	V2A (1.4301)	33,7 x 2,0	56	finish 320	2
10206442A2	V2A (1.4301)	42,4 x 2,0	63	finish 320	2
10206448A2	V2A (1.4301)	48,3 x 2,0	61	finish 320	2
10206433A4	V4A	33,7 x 2,0	56	finish 320	2
10206442A4	V4A	42,4 x 2,0	63	finish 320	2





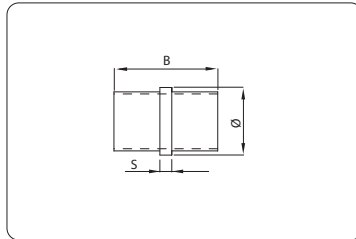
tube connectors and accessories

■ tube connector 135°



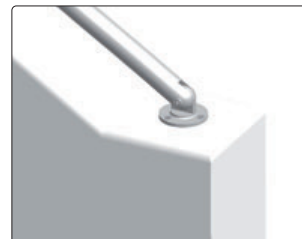
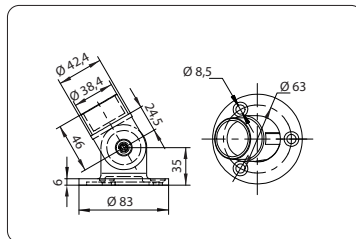
item no.	material	Ø	B	finish	
10206533A2	V2A (1.4301)	33,7 x 2,0	45	finish 320	2
10206542A2	V2A (1.4301)	42,4 x 2,0	37	finish 320	2
10206548A2	V2A (1.4301)	48,3 x 2,0	47	finish 320	2
10206533A4	V4A	33,7 x 2,0	45	finish 320	2
10206542A4	V4A	42,4 x 2,0	45	finish 320	2

■ tube connector 180°



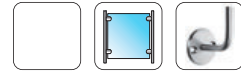
item no.	material	Ø	B	S	finish	
10206633A2	V2A (1.4301)	33,7 x 2,0	43	3,5	finish 320	2
10206642A2	V2A (1.4301)	42,4 x 2,0	46	4,0	finish 320	2
10206648A2	V2A (1.4301)	48,3 x 2,0	63	7,0	finish 320	2
10206633A4	V4A	33,7 x 2,0	43	3,5	finish 320	2
10206642A4	V4A	42,4 x 2,0	46	4,0	finish 320	2

■ tube connector with flange plate, variable

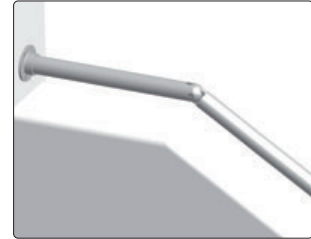
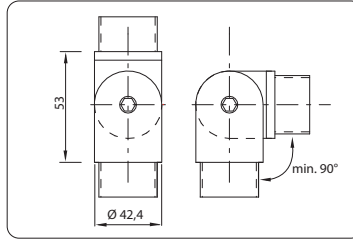


item no.	material	Ø	finish	
10206742A4	V4A	42,4 x 2,0	finish 320	1

tube connectors and accessories

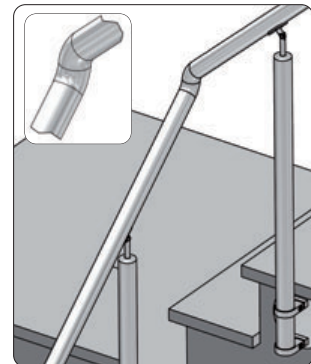
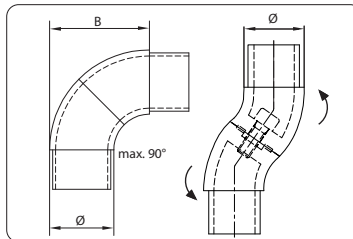
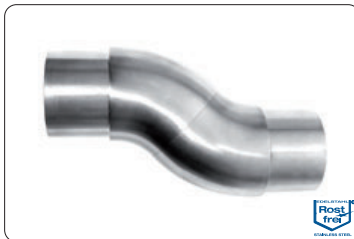


■ tube connector with joint



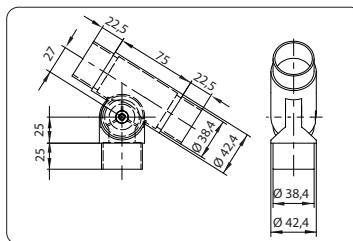
item no.	material	Ø	B	finish	
10206833A2	V2A (1.4301)	33,7 x 2,0	43	finish 320	1
10206842A2	V2A (1.4301)	42,4 x 2,0	53	finish 320	1
10206833A4	V4A	33,7 x 2,0	43	finish 320	1
10206842A4	V4A	42,4 x 2,0	53	finish 320	1

■ tube connector, infinitely adjustable

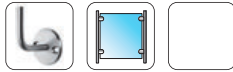


item no.	material	Ø	B	finish	
10206933A4	V4A	33,7 x 2,0	58	finish 320	1
10206942A4	V4A	42,4 x 2,0	66	finish 320	1

■ t-connector with joint

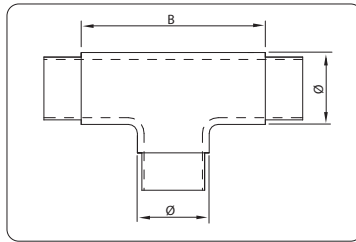


item no.	material	Ø	finish	
10207042A4	V4A	Ø 42,4 x 2,0	finish 320	1



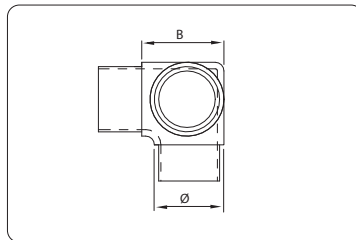
tube connectors and accessories

■ t-connector



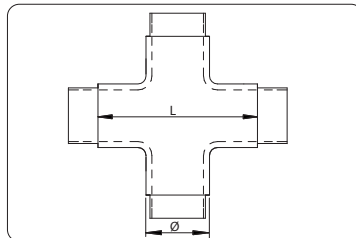
item no.	material	Ø	B	finish	
10207133A2	V2A (1.4301)	33,7 x 2,0	76	finish 320	1
10207142A2	V2A (1.4301)	42,4 x 2,0	59	finish 320	1
10207133A4	V4A	33,7 x 2,0	76	finish 320	1
10207142A4	V4A	42,4 x 2,0	87	finish 320	1

■ corner connector 3-way



item no.	material	Ø	B	finish	
10207233A2	V2A (1.4301)	33,7 x 2,0	55	finish 320	1
10207242A2	V2A (1.4301)	42,4 x 2,0	51	finish 320	1
10207233A4	V4A	33,7 x 2,0	55	finish 320	1
10207242A4	V4A	42,4 x 2,0	51	finish 320	1

■ tube connector 4-way

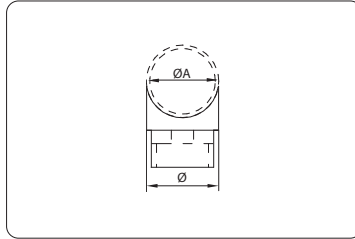


item no.	material	Ø	L	finish	
10207333A2	V2A (1.4301)	33,7 x 2,0	75	finish 320	1
10207342A2	V2A (1.4301)	42,4 x 2,0	85	finish 320	1
10207342A4	V4A	42,4 x 2,0	85	finish 320	1

tube connectors and accessories

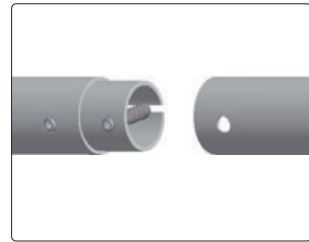
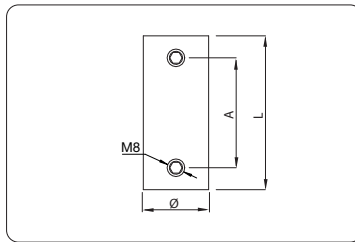


■ tube adapter 90°



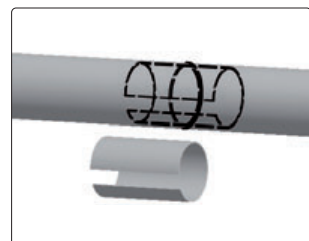
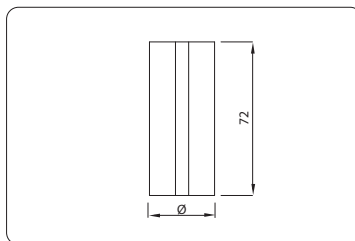
item no.	material	Ø	adapter ØA	finish	
10207433A2	V2A (1.4301)	33,7 x 2,0	33,7	finish 320	2
10207533A2	V2A (1.4301)	33,7 x 2,0	42,4	finish 320	2
10207542A2	V2A (1.4301)	42,4 x 2,0	42,4	finish 320	2
10207433A4	V4A	33,7 x 2,0	33,7	finish 320	2
10207533A4	V4A	33,7 x 2,0	42,4	finish 320	2
10207542A4	V4A	42,4 x 2,0	42,4	finish 320	2

■ expansion sleeve with clamping screws

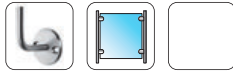


item no.	material	for tube Ø	A	L	finish	
10207633A2	V2A (1.4301)	33,7 x 2,0	40	60	raw	2
10207642A2	V2A (1.4301)	42,4 x 2,0	40	60	raw	2
10207742A2	V2A (1.4301)	42,4 x 2,6	50	70	raw	2

■ slotted connector sleeve

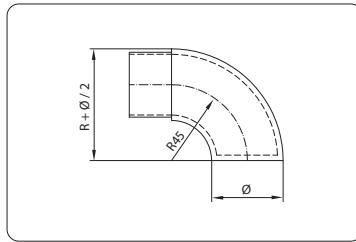


item no.	material	for tube Ø	finish	
10207833A2	V2A (1.4301)	33,7	raw	2
10207842A2	V2A (1.4301)	42,4	raw	2



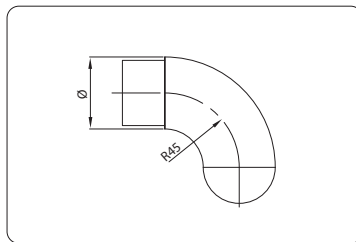
tube connectors and accessories

■ end elbow flat



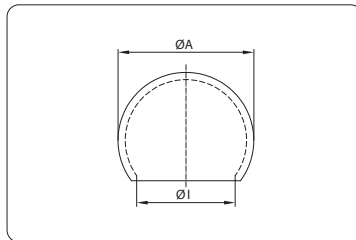
item no.	material	Ø	finish	
10207942A2	V2A (1.4301)	42,4 x 2,0	finish 320	1
10207933A4	V4A	33,7 x 2,0	finish 320	1
10207942A4	V4A	42,4 x 2,0	finish 320	1

■ end elbow round



item no.	material	Ø	finish	
10208033A4	V4A	33,7 x 2,0	finish 320	1
10208042A4	V4A	42,4 x 2,0	finish 320	1
10208048A4	V4A	48,3 x 2,0	finish 320	1

■ ball end cap

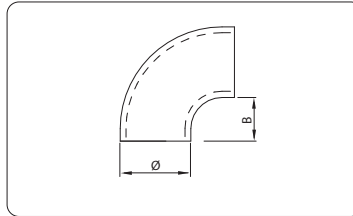


item no.	material	ØI	ØA	finish	
10208133A2	V2A (1.4301)	33,7	45	finish 320	2
10208142A2	V2A (1.4301)	42,4	55	finish 320	2
10208142A4	V4A	42,4	55	finish 320	2

tube connectors and accessories

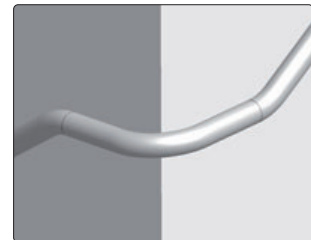
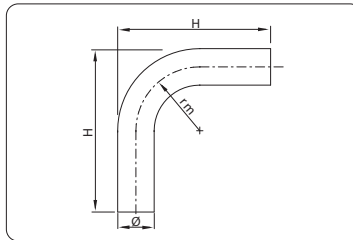


■ welding elbow 90°



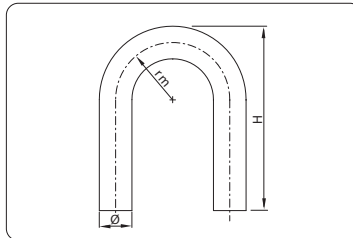
item no.	material	Ø	B	finish	🔗
10208233A2	V2A (1.4301)	33,7 x 2,0	20	raw	2
10208242A2	V2A (1.4301)	42,4 x 2,0	25	raw	2
10208248A2	V2A (1.4301)	48,3 x 2,0	32	raw	2
10208260A2	V2A (1.4301)	60,3 x 2,0	43	raw	2
10208333A2	V2A (1.4301)	33,7 x 2,0	20	finish 240	2
10208342A2	V2A (1.4301)	42,4 x 2,0	25	finish 240	2
10208233A4	V4A	33,7 x 2,0	20	raw	2
10208242A4	V4A	42,4 x 2,0	25	raw	2
10208248A4	V4A	48,3 x 2,0	32	raw	2
10208260A4	V4A	60,3 x 2,0	43	raw	2

■ welding elbow 90°



item no.	material	Ø	rm	H	finish	🔗
10208433A2	V2A (1.4301)	33,7 x 2,0	70	180	raw	1
10208442A2	V2A (1.4301)	42,4 x 2,0	100	240	raw	1

■ welding elbow 180°

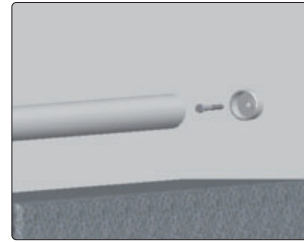
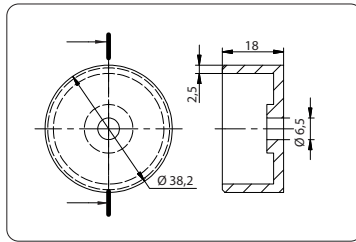


item no.	material	Ø	rm	H	finish	🔗
10208533A2	V2A (1.4301)	33,7 x 2,0	70	180	raw	1
10208642A2	V2A (1.4301)	42,4 x 2,0	64	240	raw	1
10208742A2	V2A (1.4301)	42,4 x 2,0	85	225	raw	1
10208842A2	V2A (1.4301)	42,4 x 2,0	100	220	raw	1



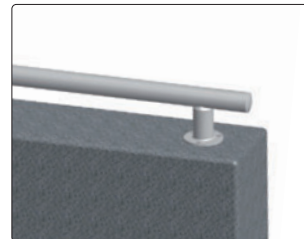
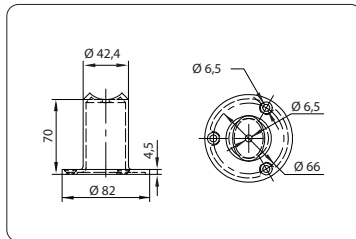
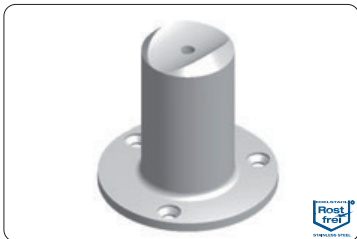
tube connectors and accessories

■ wall mounting



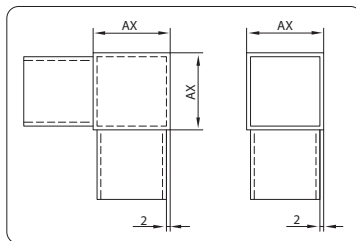
item no.	material	tube	finish	
10208942A4	V4A	Ø 42,4 x 2,0	finish 240	2

■ flange plate with tube adapter



item no.	material	adapter	finish	
10209042A4	V4A	Ø 42,4	finish 320	1

■ corner connector 90°

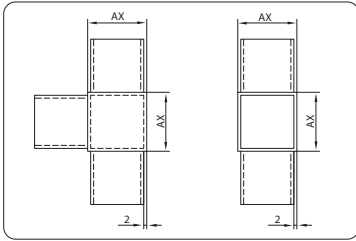
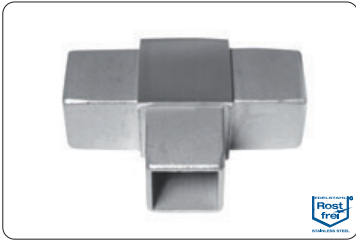


item no.	material	AX	finish	
10209130A4	V4A	30 x 30 x 2,0	finish 240	2
10209140A4	V4A	40 x 40 x 2,0	finish 240	2

tube connectors and accessories

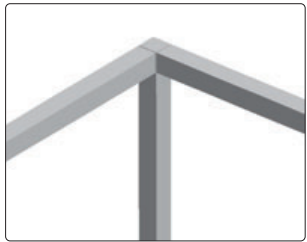
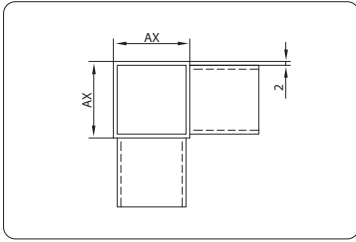


t-connector



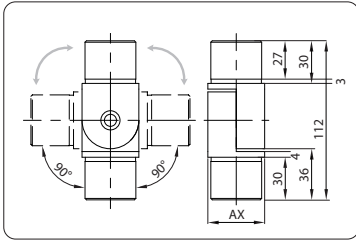
item no.	material	AX	finish	
10209230A4	V4A	30 x 30 x 2,0	finish 240	1
10209240A4	V4A	40 x 40 x 2,0	finish 240	1

corner connector 3-way

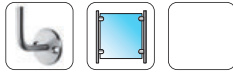


item no.	material	AX	finish	
10209330A4	V4A	30 x 30 x 2,0	finish 240	1
10209340A4	V4A	40 x 40 x 2,0	finish 240	1

connector with joint

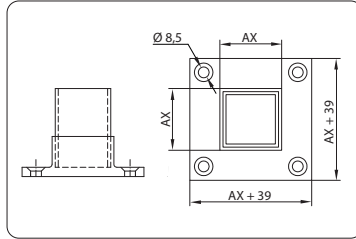


item no.	material	AX	finish	
10234130A4	V4A	40 x 40 x 2,0	finish 240	1



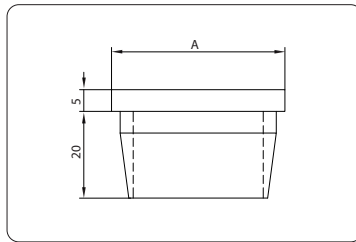
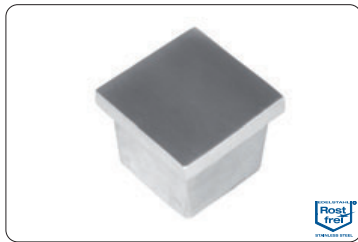
tube connectors and accessories

flange plate



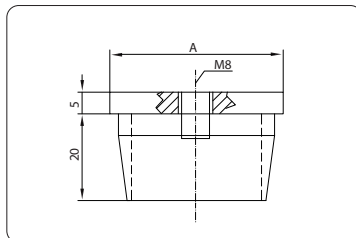
item no.	material	AX	finish	
10209430A4	V4A	30 x 30 x 2,0	finish 240	1
10209440A4	V4A	40 x 40 x 2,0	finish 240	1

end cap flat, hollow



item no.	material	A tube	finish	
10209530A2	V2A (1.4301)	30 x 30 x 2,0	finish 240	2
10209540A2	V2A (1.4301)	40 x 40 x 2,0	finish 240	2
10209530A4	V4A	30 x 30 x 2,0	finish 240	2
10209540A4	V4A	40 x 40 x 2,0	finish 240	2

end cap flat, with internal thread, hollow



item no.	material	A tube	finish	
10209630A2	V2A (1.4301)	30 x 30 x 2,0	finish 240	2
10209640A2	V2A (1.4301)	40 x 40 x 2,0	finish 240	2
10209630A4	V4A	30 x 30 x 2,0	finish 240	2
10209640A4	V4A	40 x 40 x 2,0	finish 240	2

INFO

You can find our threaded handrail supports on page 94.