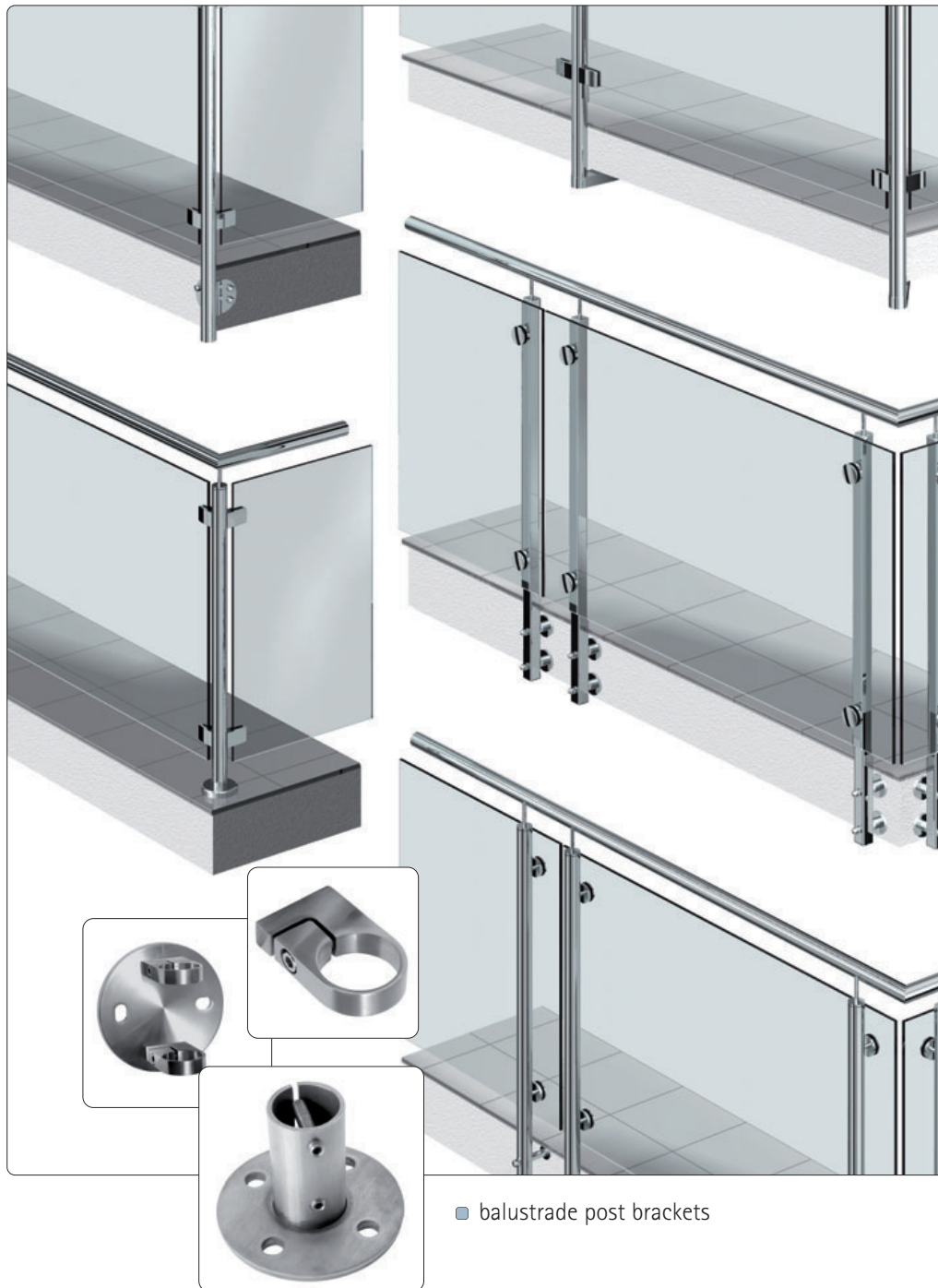
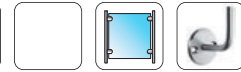


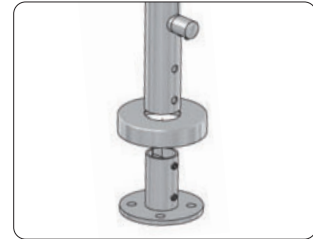
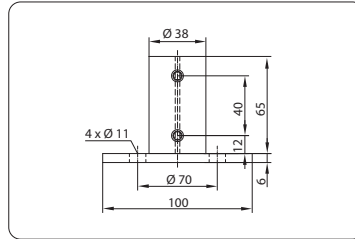
Balustrade Post Brackets



balustrade post brackets



■ floor anchor with expansion sleeve

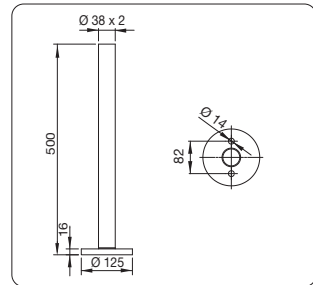
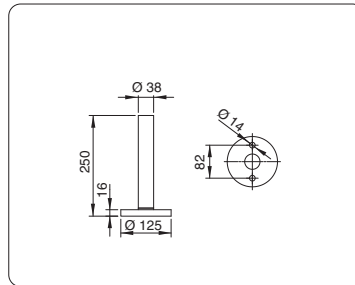


item no.	material	tube Ø	finish	
10209742A2	V2A (1.4301)	42,4 x 2,0	raw	1
10209742A4	V4A	42,4 x 2,0	raw	1

INFO

For cover plates please see page 117.

■ floor anchor reinforced for round tube

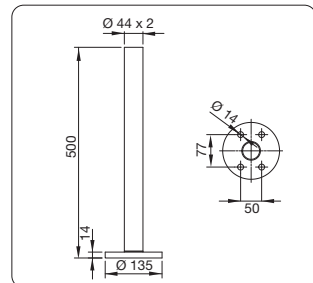
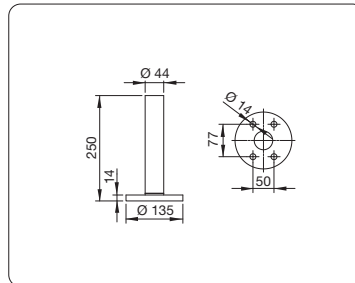


item no.	material	Ø	L	design	finish	
10209838A2	V2A (1.4301)	38	250 mm	solid	raw	1
10209938A2	V2A (1.4301)	38 x 2	500 mm	tube	raw	1

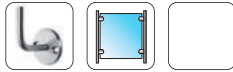
INFO

For information about the statics of our floor anchors please see page 222

■ floor anchor reinforced for round tube

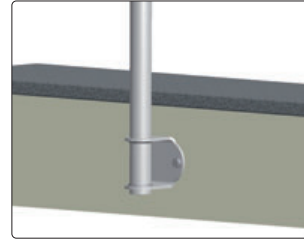
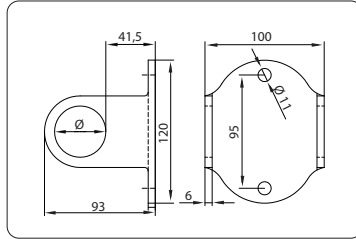


item no.	material	Ø	L	design	finish	
10210044A2	V2A (1.4301)	44	250 mm	solid	raw	1
10210144A2	V2A (1.4301)	44 x 2	500 mm	tube	raw	1



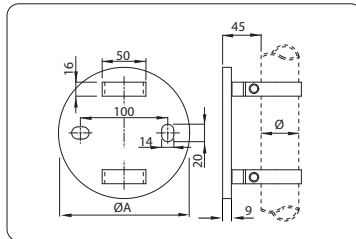
balustrade post brackets

■ post wall mount for welding



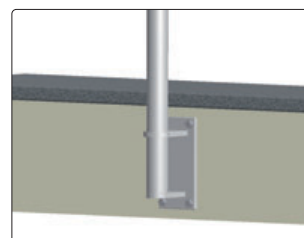
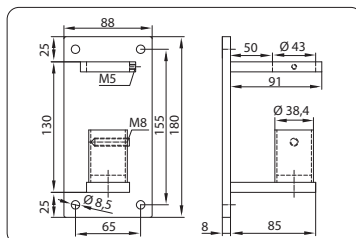
item no.	material	Ø tube	finish	
10210242A2	V2A (1.4301)	42,4	Korn finish 240	1

■ post wall mount with clamps



item no.	material	Ø tube	ØA	finish	
10210342A2	V2A (1.4301)	42,4	150	finish 240	1
10210442A2	V2A (1.4301)	42,4	120	finish 240	1
10210342A4	V4A	42,4	150	finish 240	1
10210442A4	V4A	42,4	120	finish 240	1

■ post wall mount with expansion sleeve

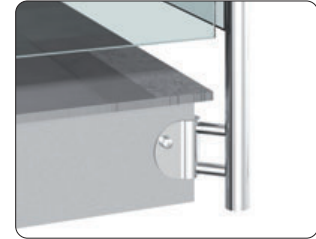
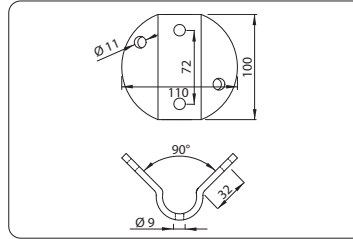


item no.	material	Ø tube	finish	
10210542A2	V2A (1.4301)	42,4 x 2,0	finish 240	1

balustrade post brackets

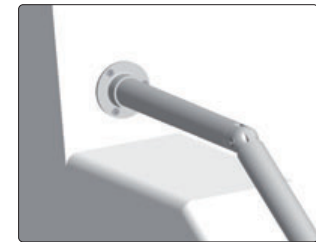
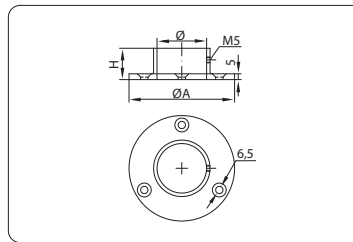


post wall mount for 90° corners



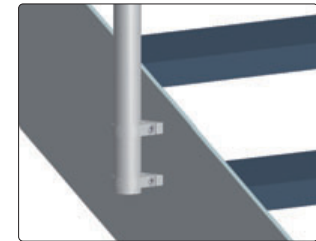
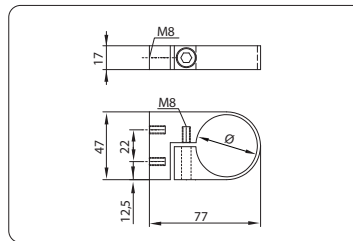
item no.	material	finish	
10210600A2	V2A (1.4301)	finish 240	2

flange plate



item no.	material	tube Ø	ØA	H	finish	
10210733A2	V2A (1.4301)	33,7	70	20	finish 320	2
10210742A2	V2A (1.4301)	42,4	84	25	finish 320	2
10210733A4	V4A	33,7	70	20	finish 320	2
10210742A4	V4A	42,4	84	25	finish 320	2

round tube clamp

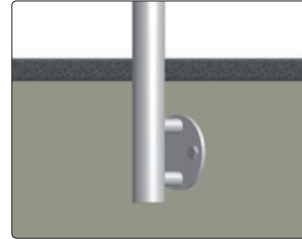
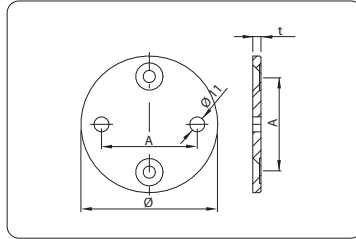


Item No.	material	tube Ø	finish	
10210842A2	V2A (1.4301)	42,4	finish 240	2



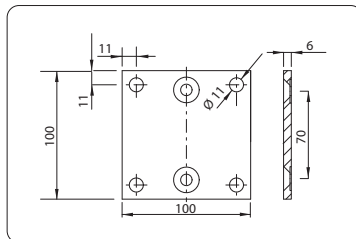
balustrade post brackets

post wall mounting plate round



item no.	material	Ø	A	t	finish	
10210900A2	V2A (1.4301)	100	70	6	finish 240	2
10211000A2	V2A (1.4301)	125	95	8	finish 240	2

post wall mounting plate square



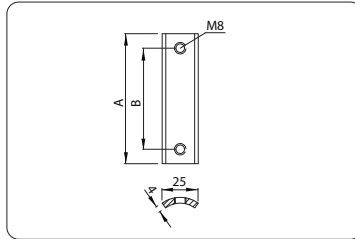
item no.	material	finish	
10211100A2	V2A (1.4301)	finish 240	2



balustrade post brackets



internal mounting plate



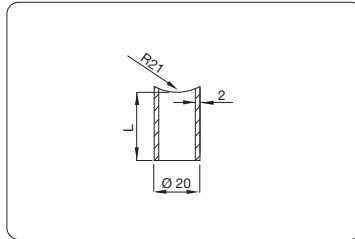
application
10210900A2, 10211242A2, 10211330A2

item no.	material	Ø tube	A	B	finish	
10211242A2	V2A (1.4301)	42,4	90	70	raw	2
10234242A2	V2A (1.4301)	42,4	115	95	raw	2

INFO

for items 10210900A2 / 10211000A2 / 10211100A2

spacer for wall mount



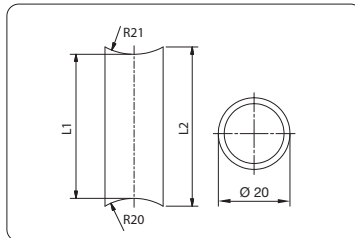
application
10211330A2, 10211370A2

item no.	material	L	finish	
10211330A2	V2A (1.4301)	30	finish 240	4
10211370A2	V2A (1.4301)	70	finish 240	4

INFO

for items 10210900A2 / 10211000A2 / 10211100A2

spacer for wall mount



item no.	material	L1	L2	finish	
10233942A2	V2A (1.4301)	50	55	finish 240	4

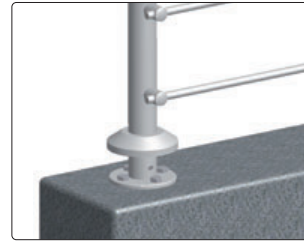
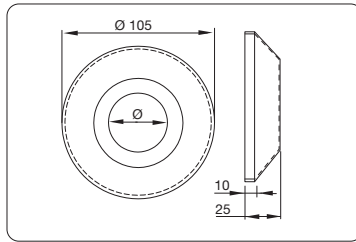
INFO

screw M8 (130 mm) not includes



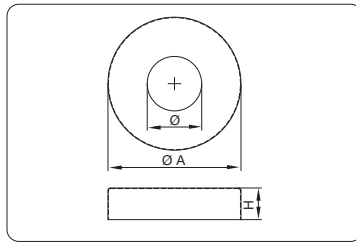
balustrade post brackets

cover plate, beveled



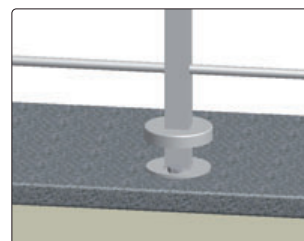
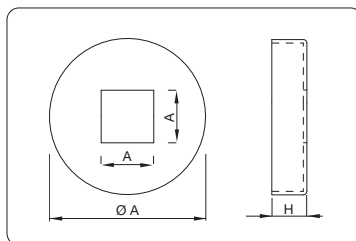
item no.	material	Ø	finish	
10211442A2	V2A (1.4301)	43	finish 240	2

cover plate



item no.	material	Ø	ØA	H	finish	
10211533A2	V2A (1.4301)	34,5	85	15	finish 240	2
10211542A2	V2A (1.4301)	43,0	85	15	finish 240	2
10211642A2	V2A (1.4301)	43,0	105	25	finish 240	2
10211648A2	V2A (1.4301)	49,0	105	25	finish 240	2
10211642A4	V4A	43,0	105	15	finish 240	2
10211742A2	V2A (1.4301)	43,0	126	25	finish 240	2
10211748A2	V2A (1.4301)	49,0	126	25	finish 240	2

cover plate for square tube



item no.	material	A	ØA	H	finish	
10211830A4	V4A	30 x 30	85	15	finish 240	2
10211940A4	V4A	40 x 40	105	15	finish 240	2