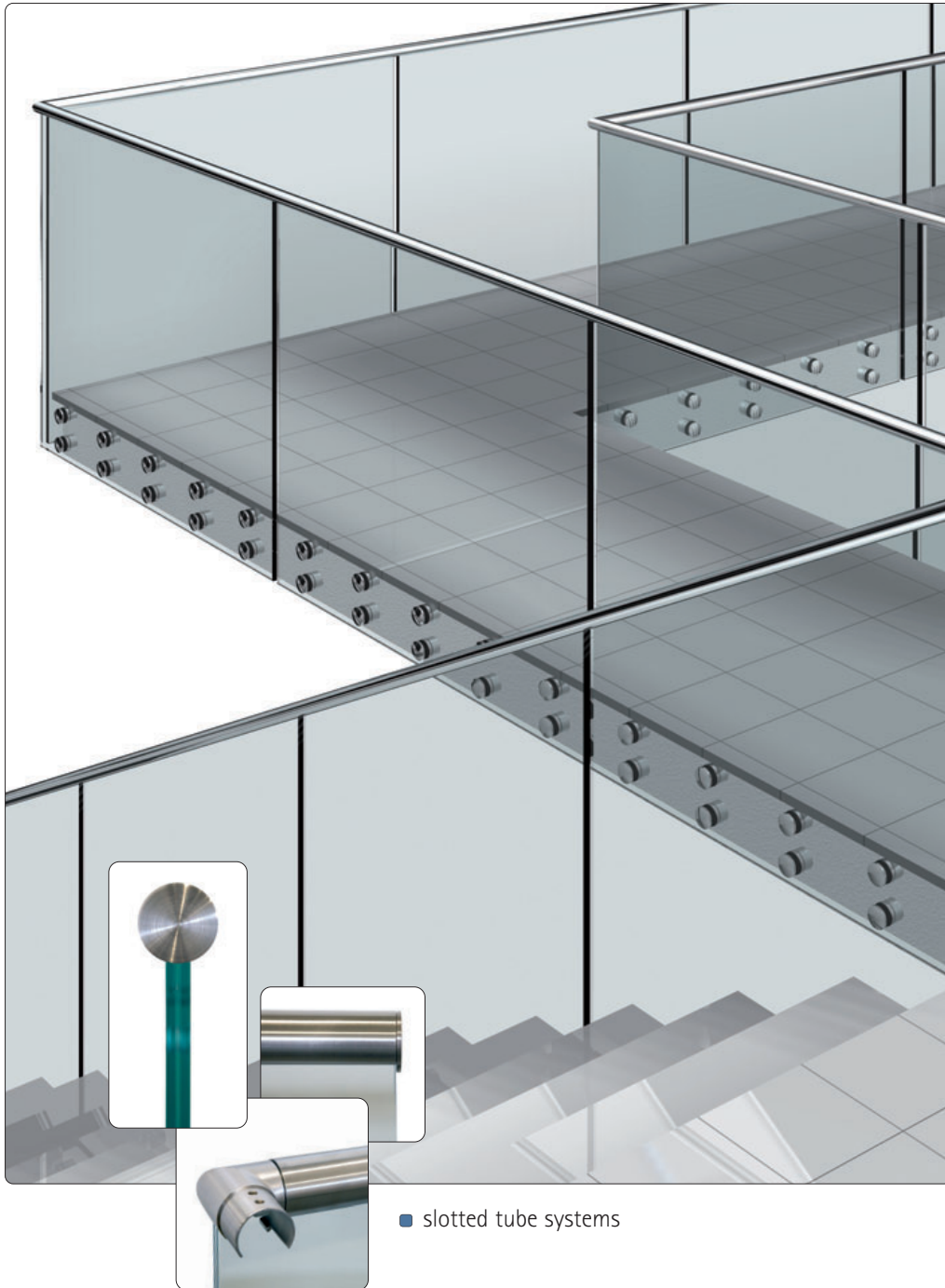
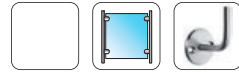


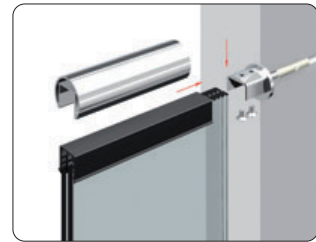
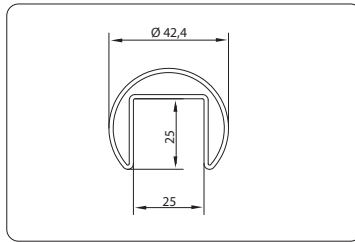
Slotted Tube Systems



slotted tube systems



■ slotted round tube

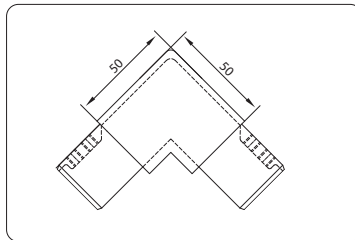


item no.	material	Ø	L	finish	
10213642A4	V4A	42,4 x 1,5	6000	finish 240	1

INFO

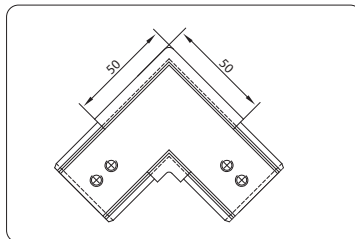
For information about TRAV categorie B please see page 130

■ corner connector vertical, for slotted round tube



item no.	material	Ø	finish	
10213742A4	V4A	42,4 x 1,5	finish 240	2

■ corner connector horizontal, for slotted round tube

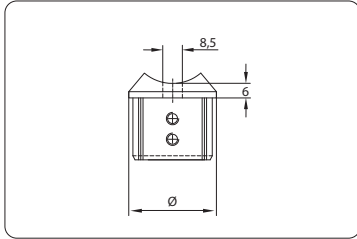


item no.	material	Ø	finish	
10213842A4	V4A	42,4 x 1,5	finish 240	2



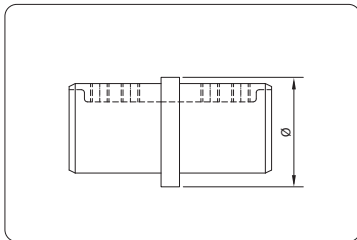
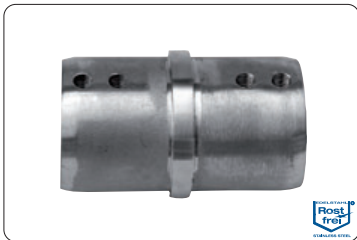
slotted tube systems

■ slotted round tube connector 90°



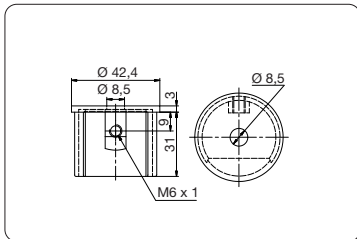
item no.	material	Ø	adapter	finish	
10213942A4	V4A	42,4 x 1,5	Ø 42,4	finish 240	2

■ slotted round tube connector 180°



item no.	material	Ø	finish	
10214042A4	V4A	42,4 x 1,5	finish 240	2

■ slotted round tube connector, wall mounting

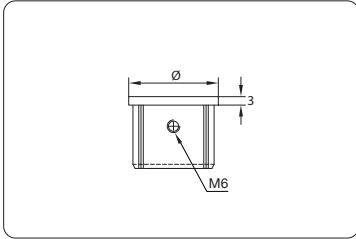


item no.	material	for tube Ø	finish	
10233842A2	V4A	42,4 x 1,5	finish 240	2

slotted tube systems

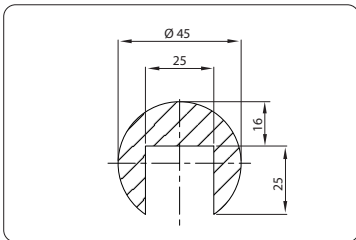


- slotted round tube end cap, flat



item no.	material	for tube Ø	finish	
10214142A4	V4A	42,4 x 1,5	Korn finish 240	2

- slotted wooden handrail, natural

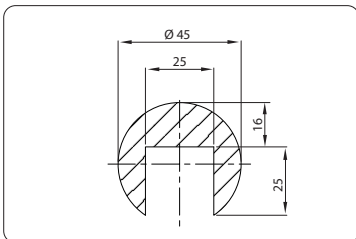


item no.	length	
10214245H0	2000	1

INFO

All wooden handrails are finished with clear lacquer.

- slotted wooden handrail, wenge



item no.	length	
10214245WE	2000	1

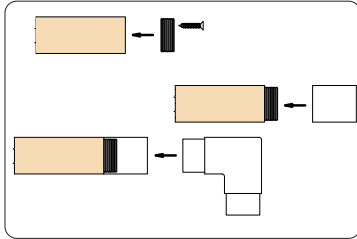
INFO

All wooden handrails are finished with clear lacquer.



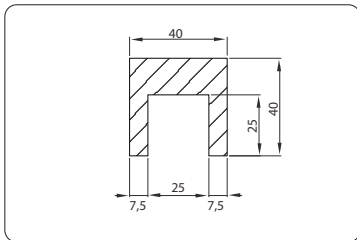
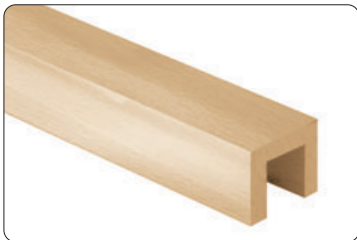
slotted tube systems

■ handrail connector, slotted



item no.	∅	
10214342KU	42,4	2

■ wooden handrail, slotted, natural

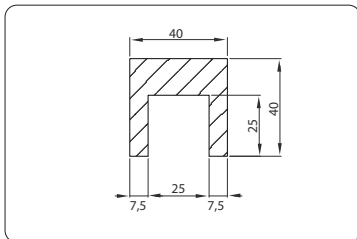


item no.	length	
110214440HO	2000	1

INFO

All wooden handrails are finished with clear lacquer.

■ wooden handrail, slotted, wenge



item no.	length	
10214440WE	2000	1

INFO

All wooden handrails are finished with clear lacquer.

slotted tube systems

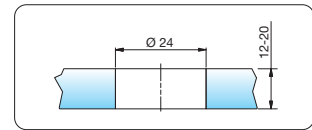
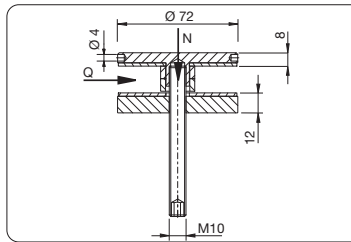
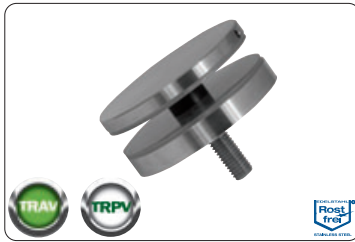


- elastomeric profile for slotted tube systems



item no.	glass thickness	Ø	
10214542KU	8 - 13	42,4 x 1,5	1lfm. 1/m
10214642KU	14 - 18	42,4 x 1,5	1lfm. 1/m
10214742KU	20 - 24	42,4 x 1,5	1lfm. 1/m

- point fixing, raised head (TRAV)



item no.	material	max. Q	max. N
10214872A2	A2 (1.4301)	4,0 kn	6,0 kn

accessories

Z060

includes

DIN913 M10 x 90 mm

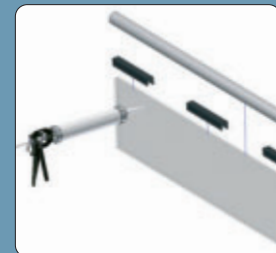
INFO

For information about TRAV please see page 236.

- stainless steel slotted round tube

This product is a TRAV-compliant Category B handrail for 20 mm laminated safety glass with 1.52 mm PVB and a glass mounting depth of at least 15 mm. Laminated safety glass with 2x10 mm tempered or heat-strengthened safety glass may be used. Glass/metal contact is prevented by attaching an elastomeric profile (with a gap of approx. 200-300 mm) to the glass panel. The handrail is connected to the glass panels by filling the remaining cavity in the U-profile with sealants in accordance with DIN 18 545-2 Group E.

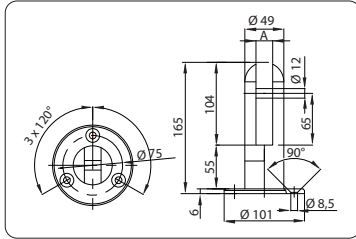
more on page 241





slotted tube systems

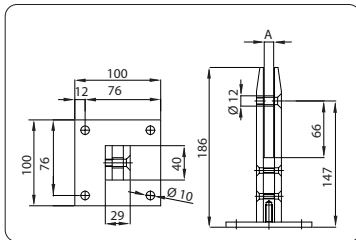
- floor anchor with glass clamp, round



INFO
Glass and metal must be separated by an epdm washer.

item no.	material	A	finish	
10214900A2	V2A (1.4301)	12 - 17,52	finish 240	1
10214900A4	V4A	12 - 17,52	finish 240	1

- floor anchor with glass clamp, square



INFO
Glass and metal must be separated by an epdm washer.

item no.	material	A	finish	
10215000A2	V2A (1.4301)	12 - 17,52	finish 240	1
10215000A4	V4A	12 - 17,52	finish 240	1

