

Wooden Handrail Systems



■ wooden handrail systems

wooden handrail systems



- wooden handrail, beech, treated



item no.	Ø	length	finish	
10215145BU	45	2000	beech, treated	1
10215245BU	45	3000	beech, treated	1

- wooden handrail, wenge, treated



item no.	Ø	length	finish	
10215145WE	45	2000	wenge, treated	1
10215245WE	45	3000	wenge, treated	1

- wooden handrail, natural, untreated



item no.	Ø	length	finish	
10215145HO	45	2000	natural, untreated	1
10215245HO	45	3000	natural, untreated	1



wooden handrail systems

- wooden handrail set, beech, treated



item no.	Ø	length	finish	
10215345BU	45	2000	beech, treated	1
10215445BU	45	3000	beech, treated	1

- wooden handrail set, wenge, treated



item no.	Ø	length	finish	
10215345WE	45	2000	wenge, treated	1
10215445WE	45	3000	wenge, treated	1

- wooden handrail set, natural, untreated

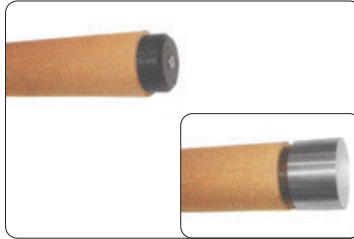


item no.	Ø	length	finish	
10215345HO	45	2000	natural, untreated	1
10215445HO	45	3000	natural, untreated	1

wooden handrail systems



Bohrlehre für Holzhandläufe Ø 45 mm



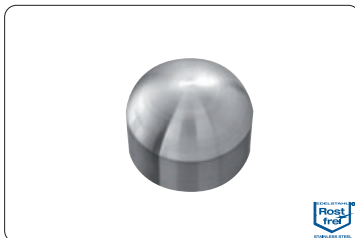
item no.	material	Ø	
10215545A2	Aluminium	45	1

Endkappe flach für Holzhandläufe



item no.	material	Ø	±	Oberfläche finish	
10215645A2	V2A (1.4301)	45	3	finish 240	2

Endkappe rund für Holzhandläufe



item no.	material	Ø	±	Oberfläche finish	
10215745A2	V2A (1.4301)	45	3	finish 240	2



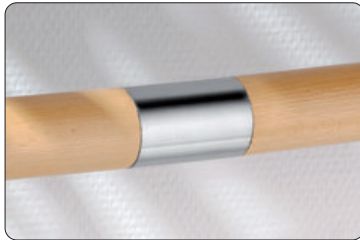
wooden handrail systems

■ T-connector for wooden handrails



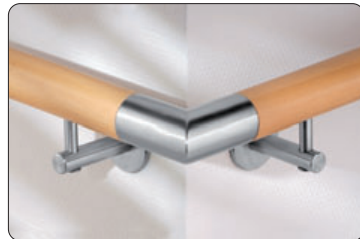
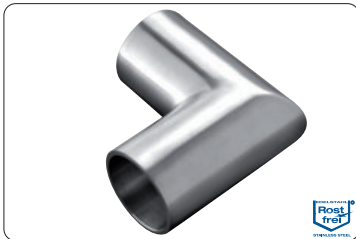
item no.	material	Ø	for Ø	±	finish	
10215842A2	V2A (1.4301)	42,4 x 2,0	45	3	finish 240	1

■ connector for wooden handrails 180°



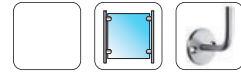
item no.	material	for Ø	±	finish	
10215945A2	V2A (1.4301)	45	3	finish 240	2

■ connector for wooden handrails 90°, square

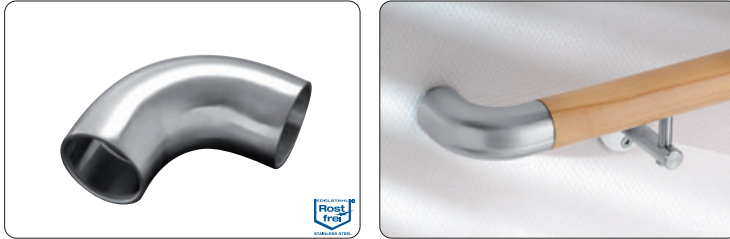


item no.	material	for Ø	±	finish	
10216045A2	V2A (1.4301)	45	3	finish 240	2

wooden handrail systems



- connector for wooden handrails 90°, round



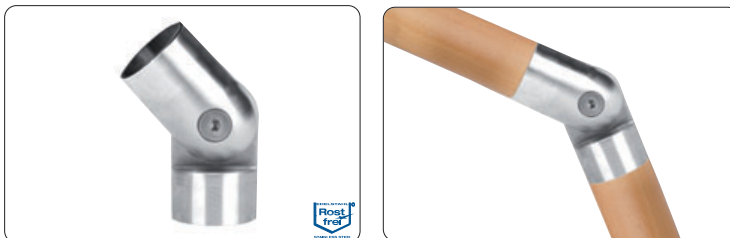
item no.	material	for Ø	±	finish	
10216145A2	V2A (1.4301)	45	3	finish 240	2

- connector for wooden handrails, infinitely adjustable

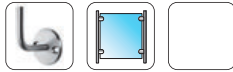


item no.	material	for Ø	±	finish	
10216245A2	V2A (1.4301)	45	3	finish 240	1

- connecting joint for wooden handrails, min. 90°



item no.	material	for Ø	±	finish	
10216345A2	V2A (1.4301)	45	3	finish 240	1



wooden handrail systems

■ assembly set

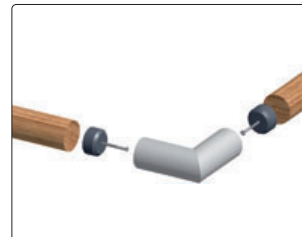
■ plastic adapter



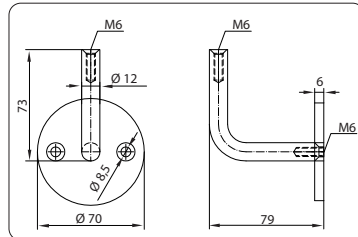
item no.	⊕	📄
10216406A2	M6	10



item no.	∅	📄
10216539KU	39	1

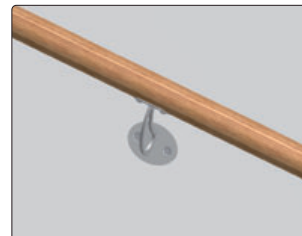
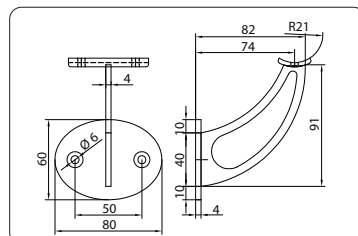


■ handrail support with internal thread



item no.	material	finish	📄
10203370A2	V2A (1.4301)	Korn finish 240	2

■ handrail support rigid, laser cut



item no.	material	adapter	finish	📄
10203580A2	V2A (1.4301)	33,7 - 42,4	Korn finish 240	2

INFO

You can find our handrail supports on page 82