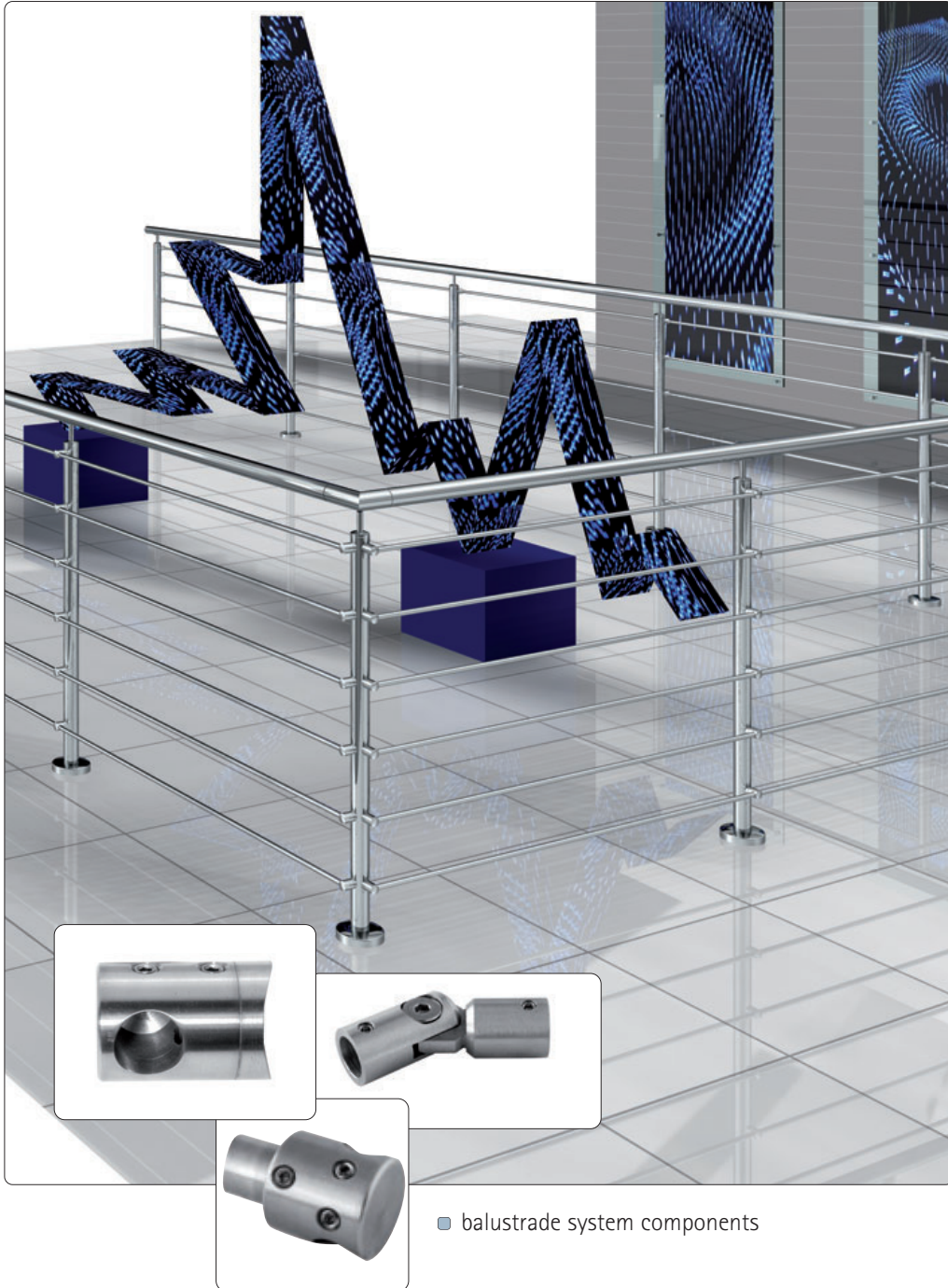


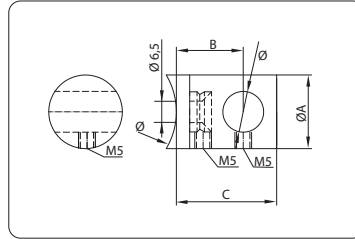
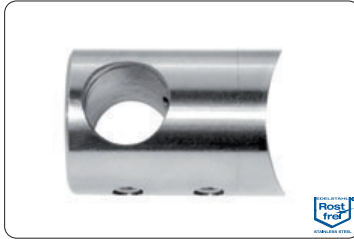
## Balustrade System Components



balustrade system components

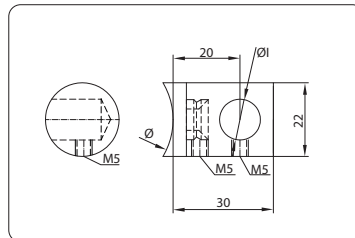


■ cross bar holder with through hole

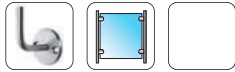


item no.	material	Ø	B	C	ØA	for tube	finish	
10216833A2	V2A (1.4301)	10,2	20	30	22	Ø 33,7	finish 240	4
10216842A2	V2A (1.4301)	10,2	20	30	22	Ø 42,4	finish 240	4
10216800A2	V2A (1.4301)	10,2	20	30	22	□	finish 240	4
10216833A4	V4A	10,2	20	30	22	Ø 33,7	finish 240	4
10216800A4	V4A	10,2	20	30	22	□	finish 240	4
10216933A2	V2A (1.4301)	12,2	20	30	22	Ø 33,7	finish 240	4
10216942A2	V2A (1.4301)	12,2	20	30	22	Ø 42,4	finish 240	4
10216900A2	V2A (1.4301)	12,2	20	30	22	□	finish 240	4
10216933A4	V4A	12,2	20	30	22	Ø 33,7	finish 240	4
10216942A4	V4A	12,2	20	30	22	Ø 42,4	finish 240	4
10216900A4	V4A	12,2	20	30	22	□	finish 240	4
10217042A2	V2A (1.4301)	16,2	25	36	24	Ø 42,4	finish 240	4

■ cross bar holder with blind hole

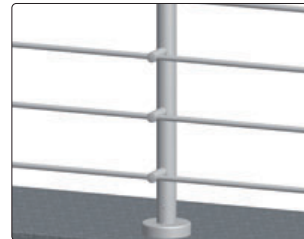
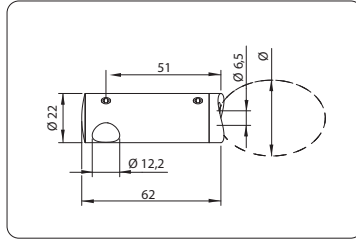


item no.	material	adapter	Ø1	for tube	finish	
10217142A2	V2A (1.4301)	L	12,2	Ø 42,4	finish 240	4
10217242A2	V2A (1.4301)	R	12,2	Ø 42,4	finish 240	4
10217142A4	V4A	L	12,2	Ø 42,4	finish 240	4
10217242A4	V4A	R	12,2	Ø 42,4	finish 240	4



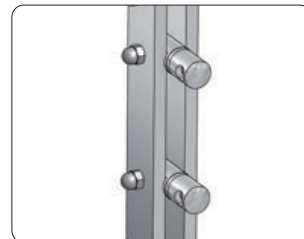
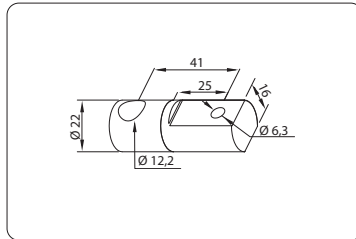
balustrade system components

■ cross bar holder with through hole



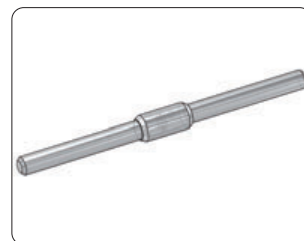
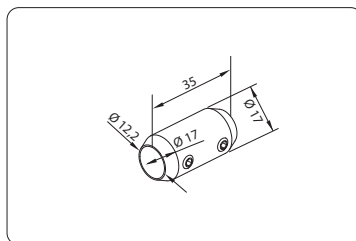
item no.	material	for tube	finish	
10217342A2	V2A (1.4301)	Ø 42,4	finish 240	4
10217300A2	V2A (1.4301)	□	finish 240	4

■ cross bar holder for flat bar mounting



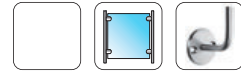
item no.	material	finish	
10217412A2	V2A (1.4301)	finish 240	4

■ connector 180°

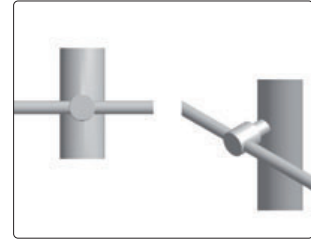
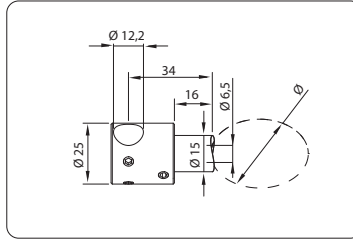


item no.	material	finish	
10217512A2	V2A (1.4301)	finish 240	4
10217512A4	V4A	finish 240	4

balustrade system components

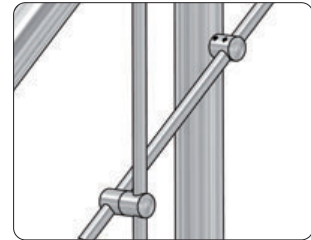
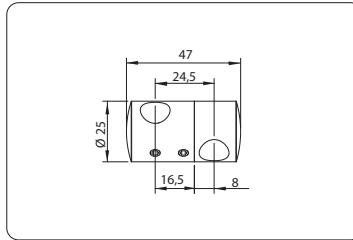


- cross bar holders with through hole for butting



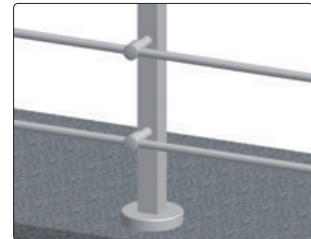
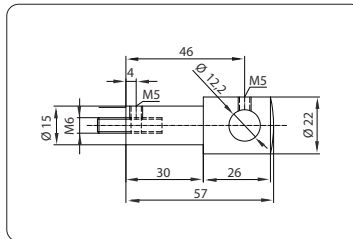
item no.	material	for tube	finish	
10217642A2	V2A (1.4301)	Ø 42,4	finish 240	4

- cross bar holder, infinitely adjustable

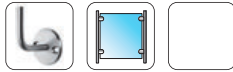


item no.	material	Ø	finish	
10217712A2	V2A (1.4301)	12,2 / 12,2	finish 240	4
10217714A2	V2A (1.4301)	14,2 / 12,2	finish 240	4

- cross bar holder with M6 fastening screw

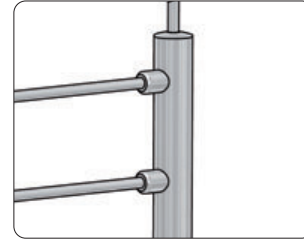
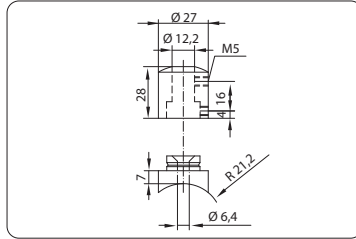


item no.	material	Ø	for tube	finish	
10217812A2	V2A (1.4301)	12,2	□	finish 240	4



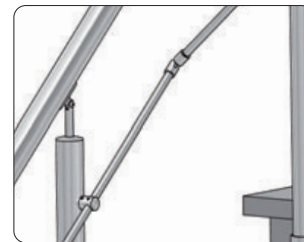
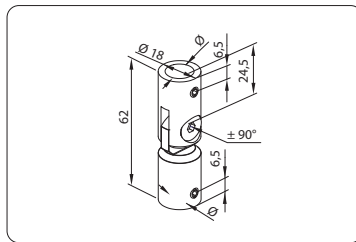
balustrade system components

■ cross bar holder 90°



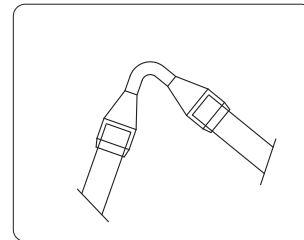
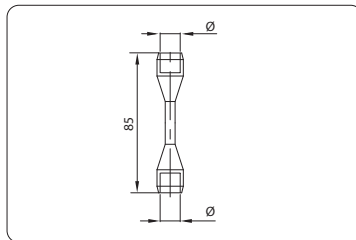
item no.	material	Ø	tube	finish	
10217942A2	V2A (1.4301)	12,2	Ø 42,4	finish 240	4
10217900A2	V2A (1.4301)	12,2	□	finish 240	4

■ cross bar holder adjustable 180° - 90°



item no.	material	Ø	finish	
10218012A2	V2A (1.4301)	12,2	finish 240	2
10218012A4	V4A	12,2	finish 240	2

■ cross bar holder bendable

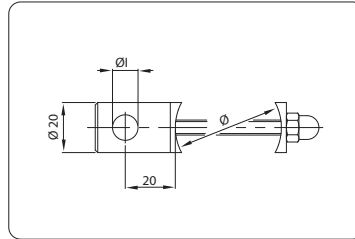
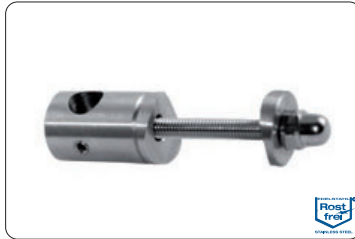


item no.	material	Ø	finish	
10218110A2	V2A (1.4301)	10,2	finish 240	4
10218112A2	V2A (1.4301)	12,2	finish 240	4
10218114A2	V2A (1.4301)	14,2	finish 240	4
10218110A4	V4A	10,2	finish 240	4
10218112A4	V4A	12,2	finish 240	4
10218114A4	V4A	14,2	finish 240	4

balustrade system components

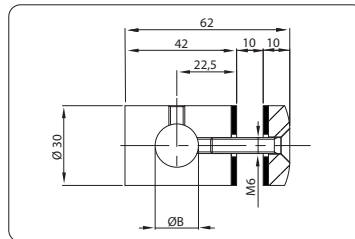


- cross bar holder for round tube with counter plate



item no.	material	Ø1	for tube	finish	
10218233A2	V2A (1.4301)	10,2	Ø 33,7	finish 240	2
10218333A2	V2A (1.4301)	12,2	Ø 33,7	finish 240	2
10218242A2	V2A (1.4301)	10,2	Ø 42,4	finish 240	2
10218342A2	V2A (1.4301)	12,2	Ø 42,4	finish 240	2
10218442A2	V2A (1.4301)	14,4	Ø 42,4	finish 240	2

- cross bar holder for glass mounting, G = 6-10.76 mm

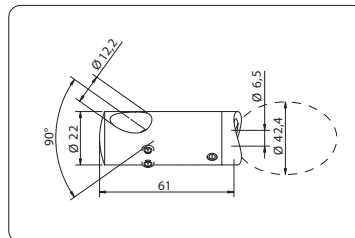
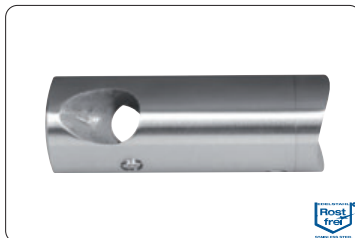


item no.	material	Ø	Ø	finish	
10218512A2	V2A (1.4301)	M6	12,2	finish 240	2
10218514A2	V2A (1.4301)	M6	14,2	finish 240	2
10218516A2	V2A (1.4301)	M6	16,2	finish 240	2
10218512A4	V4A	M6	12,2	finish 240	2
10218514A4	V4A	M6	14,2	finish 240	2
10218516A4	V4A	M6	16,2	finish 240	2

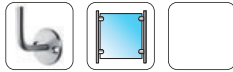
INFO

Glass and metal must be separated by an epdm washer.

- cross bar holder for 90° corners

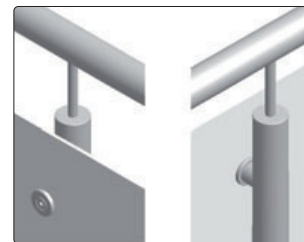
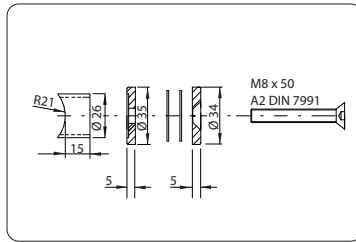


item no.	material	Ø	for tube	finish	
10218642A2	V2A (1.4301)	12,2	Ø 42,4	finish 240	2



balustrade system components

■ panel holder

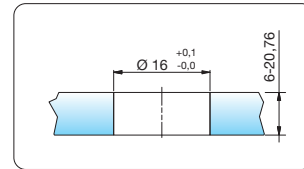
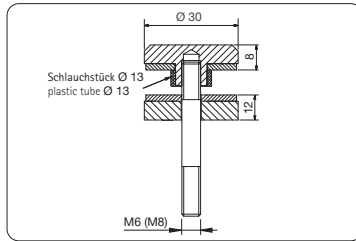


item no.	material	for tube	finish	
10218742A2	V2A (1.4301)	M8/spacer	Ø 42,4	finish 240

**INFO**

Glass and metal must be separated by an edpm washer.

■ point fixing, raised head

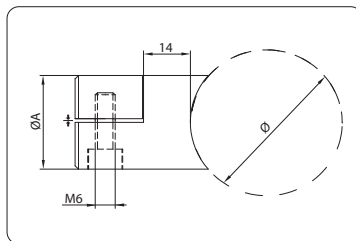


item no.	material	Ø	finish	
10218830A2	V2A (1.4301)	M6	30	s. s. turned finish
10218930A2	V2A (1.4301)	M8	30	s. s. turned finish
10219030A2	V2A (1.4301)	M6	30	s. s. turned finish
10218830A3	V2A (1.4301)	M6	30	polished
10218930A3	V2A (1.4301)	M8	30	polished
10219030A3	V2A (1.4301)	M6	30	polished

includes  
 10218830A\_ / 10218930A\_ / 10219030A\_  
 M6 (M8) x 60 mm

accessories  
 Z057ST5

■ sheet holder

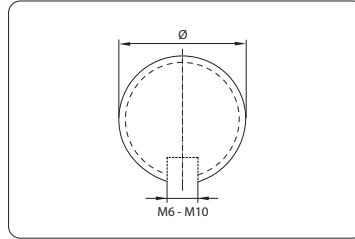


item no.	material	for tube	ØA	finish	
10219142A2	V2A (1.4301)	1-2	Ø 42,4 x 2,0	28	finish 240
10219100A2	V2A (1.4301)	1-2	□	28	finish 240
10219242A2	V2A (1.4301)	1-4	Ø 42,4 x 2,0	31	finish 240
10219342A2	V2A (1.4301)	1-4	Ø 42,4 x 2,0	25	finish 240

balustrade system components

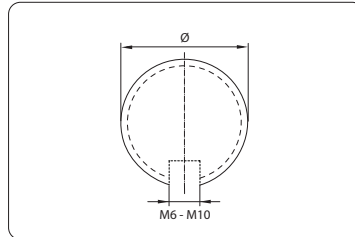


■ stainless steel ball



item no.	material	⊕	Ø	finish	🔗
10219425A2	V2A (1.4301)	M6	25	finish 320	2
10219430A2	V2A (1.4301)	M6	30	finish 320	2
10219440A2	V2A (1.4301)	M6	40	finish 320	2
10219550A2	V2A (1.4301)	M8	50	finish 320	2
10219560A2	V2A (1.4301)	M8	60	finish 320	2
10219570A2	V2A (1.4301)	M8	70	finish 320	2
10219580A2	V2A (1.4301)	M8	80	finish 320	2
10219610A2	V2A (1.4301)	M10	100	finish 320	1
10219612A2	V2A (1.4301)	M10	120	finish 320	1
10219615A2	V2A (1.4301)	M10	150	finish 320	1
10219620A2	V2A (1.4301)	M10	200	finish 320	1

■ stainless steel ball, brass finish

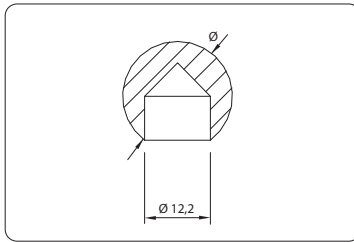


item no.	material	⊕	Ø	finish	🔗
10219430A7	V2A (1.4301)	M6	30	gold plated, polished	2
10219440A7	V2A (1.4301)	M6	40	gold plated, polished	2
10219450A7	V2A (1.4301)	M6	50	gold plated, polished	2
10219560A7	V2A (1.4301)	M8	60	gold plated, polished	2
10219580A7	V2A (1.4301)	M8	80	gold plated, polished	2
10219610A7	V2A (1.4301)	M10	100	gold plated, polished	1
10219612A7	V2A (1.4301)	M10	120	gold plated, polished	1



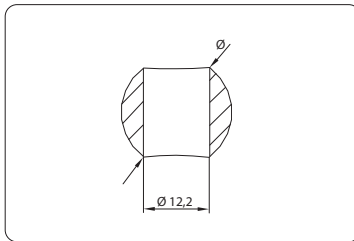
balustrade system components

- stainless steel ball, with blind hole, solid



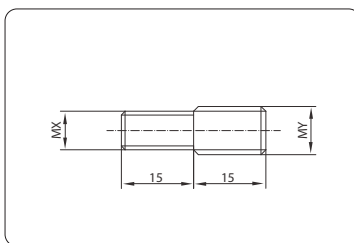
item no.	material	Ø	finish	
10219720A2	V2A (1.4301)	20	finish 240	4
10219725A2	V2A (1.4301)	25	finish 240	4
10219730A2	V2A (1.4301)	30	finish 240	4

- stainless steel ball, with through hole, solid



item no.	material	Ø	finish	
10219825A2	V2A (1.4301)	25	finish 240	4
10219830A2	V2A (1.4301)	30	finish 240	4

- stainless steel threaded adapter



item no.	material	MX/MY	
10219908A20	V2A (1.4301)	M6/M8	4
10219910A2	V2A (1.4301)	M8/M10	4