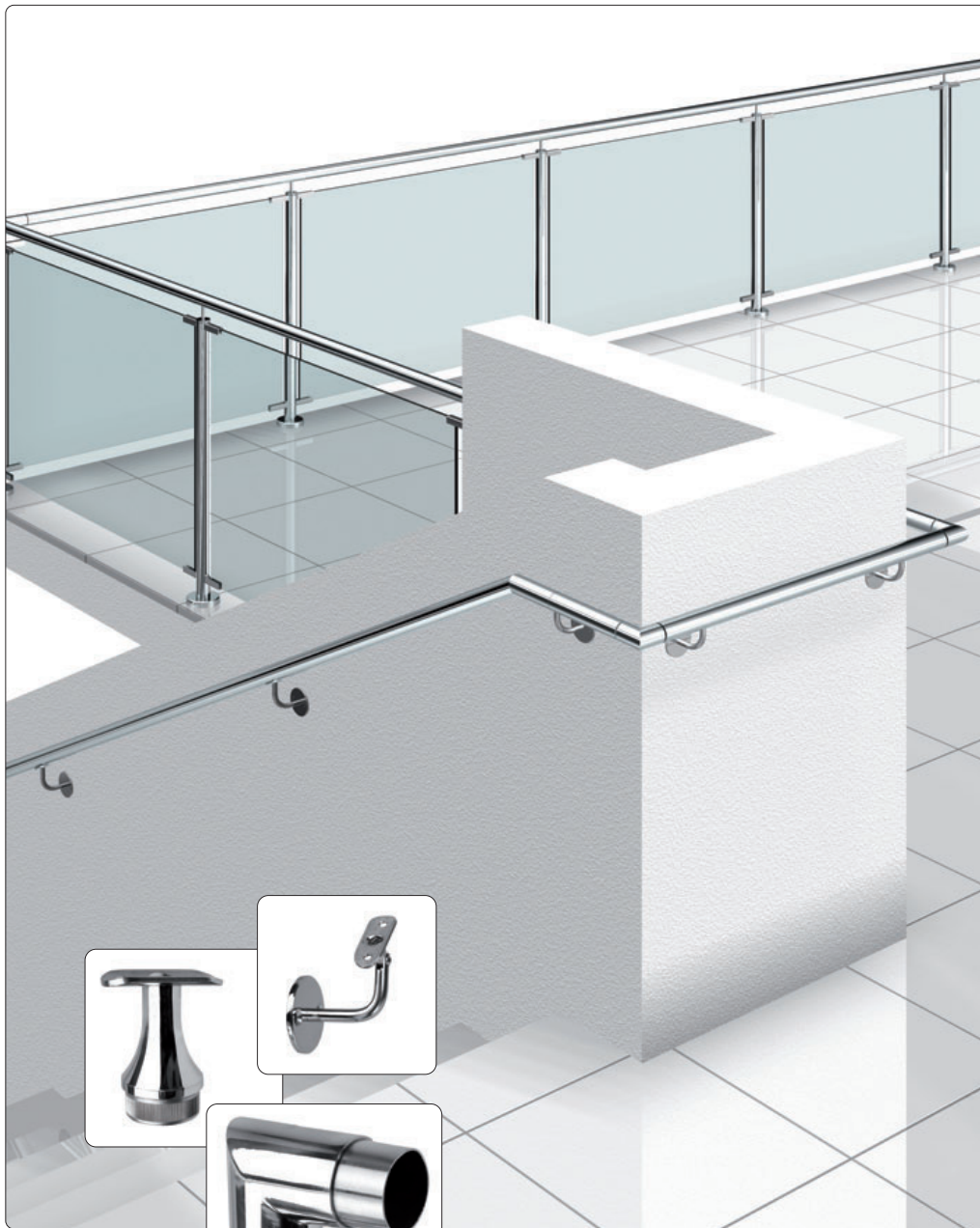


## Balustrade System Components - Polished

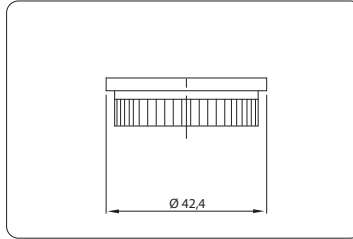


■ balustrade system components polished

balustrade system components polished

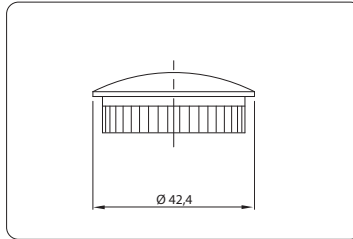


■ end cap flat, solid



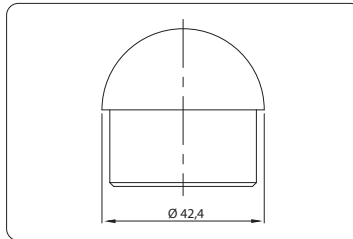
item no.	material	for tube Ø	finish	
10200842A5	V4A	42,4 x 2,0	polished	2

■ end cap oval, solid

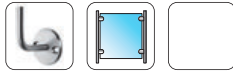


item no.	material	for tube Ø	finish	
10201142A5	V4A	42,4 x 2,0	polished	2

■ end cap round, solid

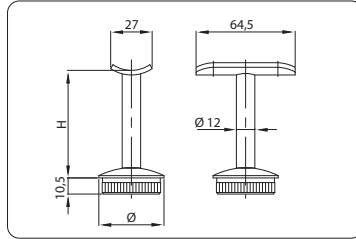


item no.	material	for tube Ø	finish	
10220042A5	V4A	42,4 x 2,0	polished	2



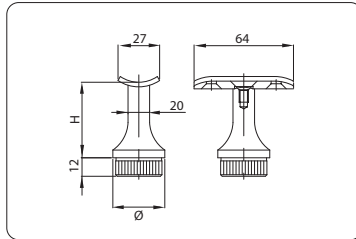
balustrade system components polished

■ handrail support rigid



item no.	material	for tube Ø	H	adapter	finish	
10220142A5	V4A	42,4 x 2,0	75	Ø 33,7 - 42,4	polished	2

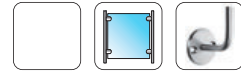
■ handrail support rigid, massive



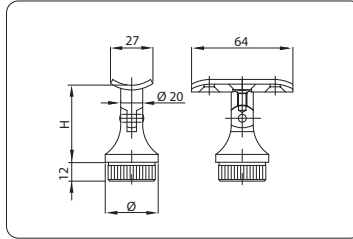
item no.	material	for tube Ø	H	adapter	finish	
10220242A5	V4A	42,4 x 2,0	58	Ø 33,7 - 42,4	polished	2



balustrade system components polished

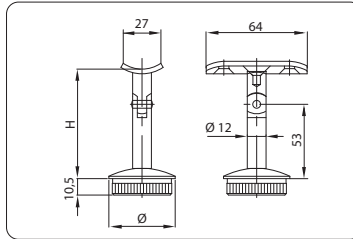


- handrail support variable, solid



item no.	material	for tube Ø	H	adapter	finish	
10220342A5	V4A	42,4 x 2,0	58	Ø 33,7 - 42,4	polished	2

- handrail support variable



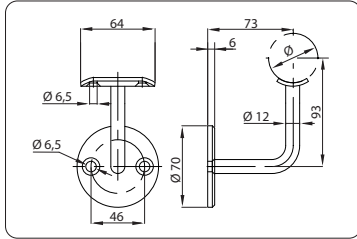
item no.	material	for tube Ø	H	adapter	finish	
10220442A5	V4A	42,4 x 2,0	75	Ø 33,7 - 42,4	polished	2





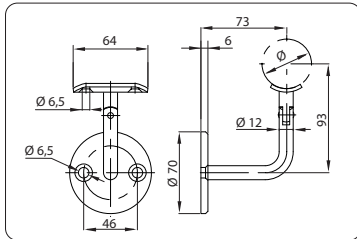
balustrade system components polished

■ handrail support rigid



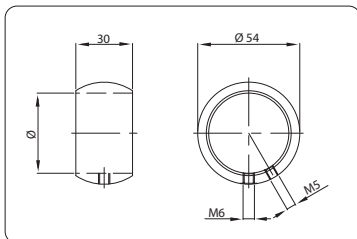
item no.	material	Ø	finish	
10220533A5	V4A	33,7 - 42,4	polished	2

■ handrail support variable



item no.	material	Ø	finish	
10220633A5	V4A	33,7 - 42,4	polished	2

■ ball ring

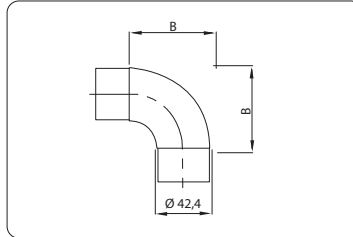


item no.	material	for tube Ø	finish	
10220742A5	V4A	42,4	polished	2

balustrade system components polished

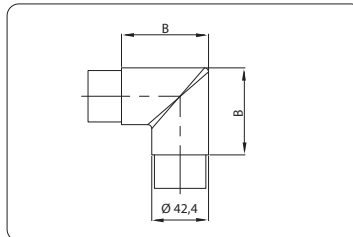


■ tube connector 90°, round



item no.	material	for tube Ø	B	finish	
10220842A5	V4A	42,4 x 2,0	65	polished	2

■ tube connector 90°, square

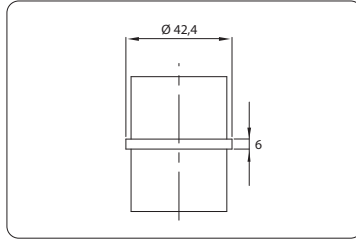


item no.	material	for tube Ø	B	finish	
10220942A5	V4A	42,4 x 2,0	65	polished	2



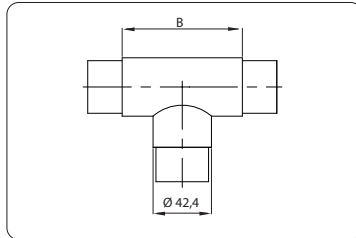
balustrade system components polished

■ tube connector 180°



item no.	material	for tube Ø	finish	
10221042A5	V4A	42,4 x 2,0	polished	2

■ T-connector

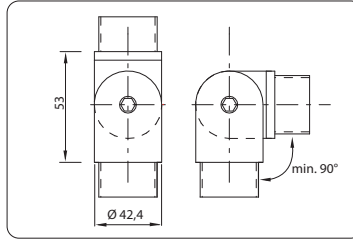


item no.	material	for tube Ø	B	finish	
10221142A5	V4A	42,4 x 2,0	87	polished	1

balustrade system components polished

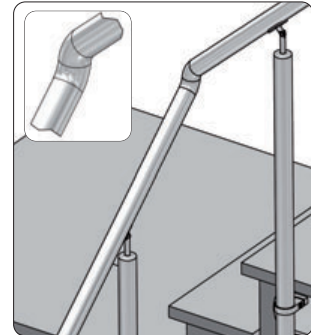
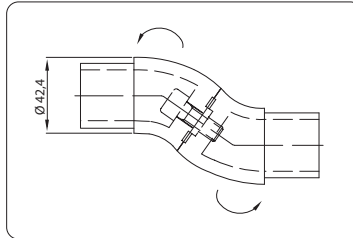


■ tube connector with joint



item no.	material	for tube Ø	finish	
10206842A5	V4A	42,4 x 2,0	poliert   polished	1

■ tube connector, infinitely adjustable



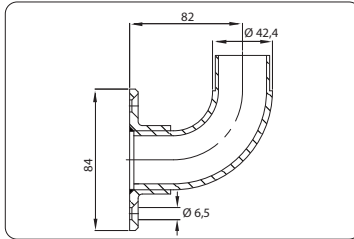
item no.	material	for tube Ø	finish	
10221242A5	V4A	42,4 x 2,0	poliert   polished	1





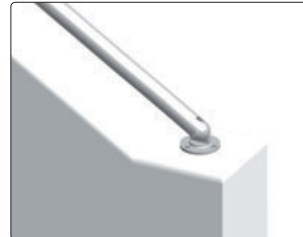
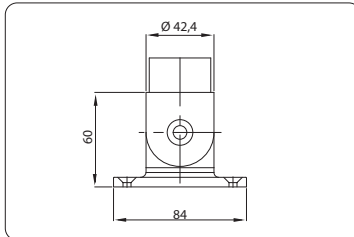
balustrade system components polished

- tube connector with flange plate, rigid



item no.	material	for tube Ø	finish	
10221342A5	V4A	42,4 x 2,0	polished	1

- tube connector with flange plate, variable

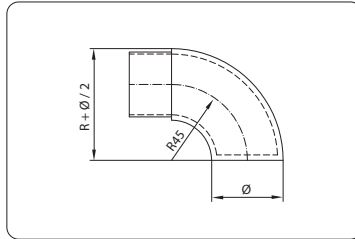


item no.	material	for tube Ø	finish	
10221442A5	V4A	42,4 x 2,0	polished	1

balustrade system components polished

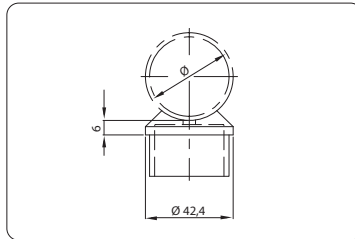


■ end elbow flat



item no.	material	for tube Ø	finish	
10207942A5	V4A	42,4 x 2,0	polished	1

■ round tube adapter 90°

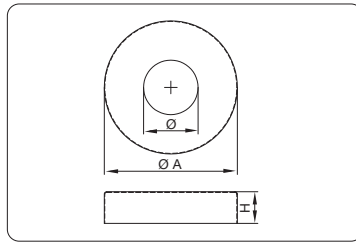


item no.	material	for tube Ø	finish	
10221542A5	V4A	42,4 x 2,0	polished	2



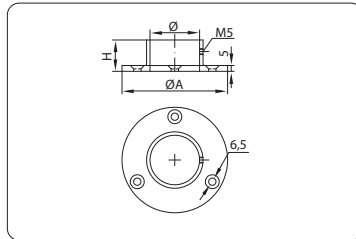
balustrade system components polished

cover plate



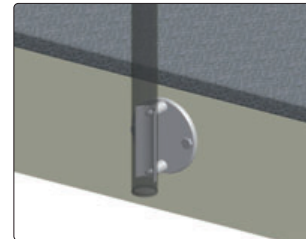
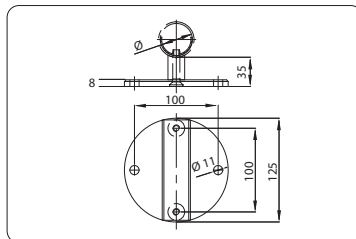
item no.	material	Ø	ØA	H	finish	
10211642A5	V4A	43	105	15	polished	2

flange plate



item no.	material	ØA	for tube Ø	H	finish	
10210742A5	V4A	85	42,4	25	polished	2

post wall mount adapter for round tube post

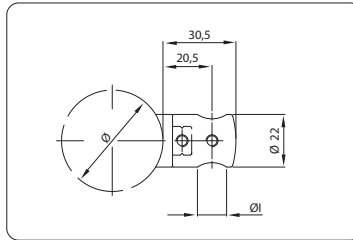


item no.	material	for tube Ø	finish	
10221642A5	V4A	42,4	polished	1

balustrade system components polished

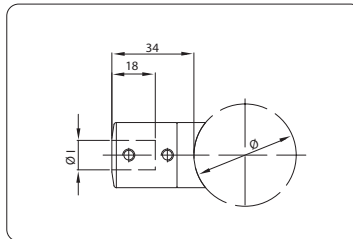


■ cross bar holder with through hole



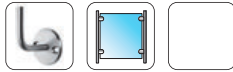
item no.	material	Ø1	for tube	finish	
10216842A5	V4A	10,2	Ø 42,4	polished	4
10216942A5	V4A	12,2	Ø 42,4	polished	4

■ bar holder 90°



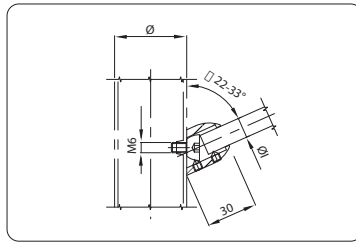
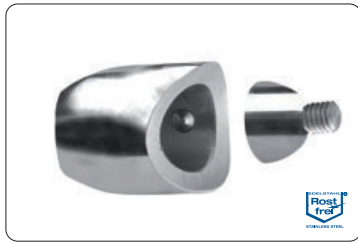
item no.	material	Ø1	for tube	finish	
10217942A5	V4A	12,2	Ø 42,4	polished	4





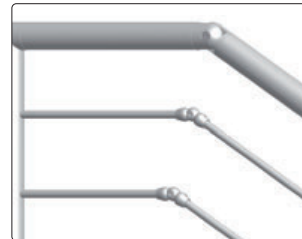
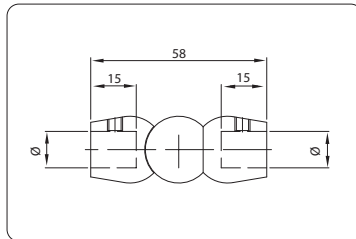
balustrade system components polished

■ bar holder variable



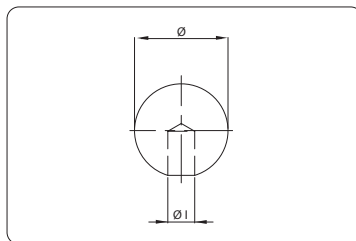
item no.	material	Øl	for tube	finish	
10221742A5	V4A	12,2	Ø 42,4	poliert   polished	4

■ cross bar holder adjustable 180° - 90°



item no.	material	Ø	finish	
10221812A5	V4A	12,2	polished	2

■ stainless steel ball with blind hole, solid



item no.	material	Ø	Øl	finish	
10219725A5	V4A	25	12,2	polished	2
10221925A5	V4A	25	14,2	polished	2