

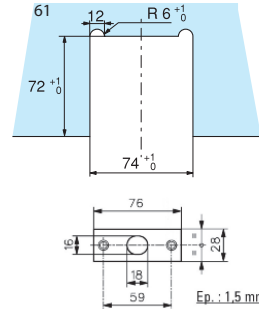
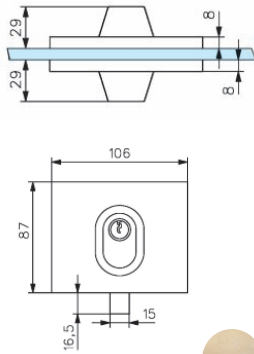
## Guard Series Locks - Pivoting Doors

*Bottom lock, matching patch keep  
and keep with guard series 1358*

**Technical features**

- For 10 mm thick toughened glass
- Assembly on notch 61
- One piece bolt with hardened insert
- European profile cylinder (DIN 18254)
- Supplied with flat keep and 3 keys

1358



**References**

Bottom lock with euro profile cylinder with 2 key entries



Polished brass

Bright chromium

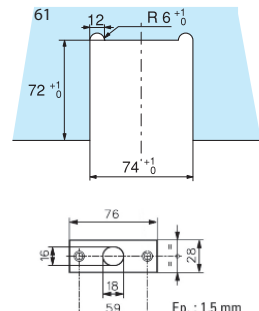
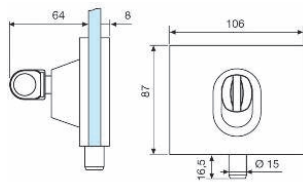
Matt chromium

1358.00.0

1358.30.0

1358.31.0

1352



**References**

Bottom lock with knob on one side



Polished brass

Bright chromium

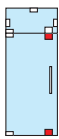
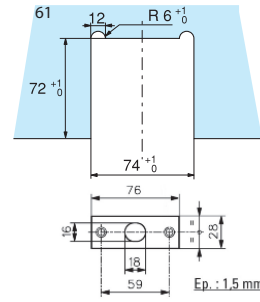
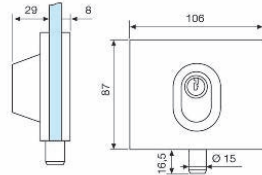
Matt chromium

1352.00.0

1352.30.0

1352.31.0

1353



References



Bottom lock with key on one side



Polished brass

1353.00.0



Bright chromium

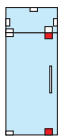
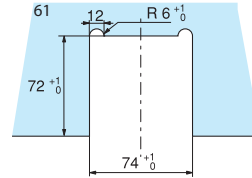
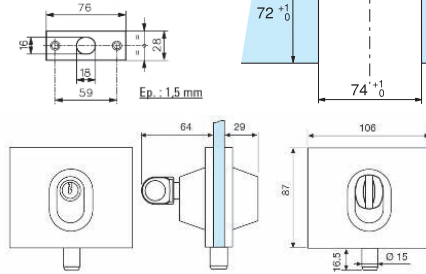
1353.30.0



Matt chromium

1353.31.0

1357



References



Bottom lock with key and knob



Polished brass

1357.00.0



Bright chromium

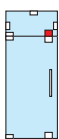
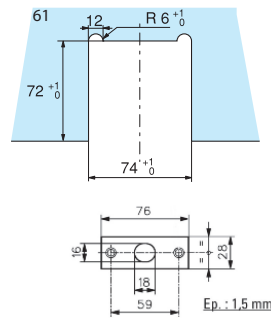
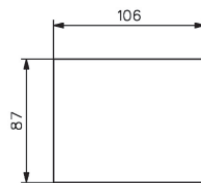
1357.30.0



Matt chromium

1357.31.0

1359



References



Matching patch keep for lock 1352, 1353, 1357 and 1358



Polished brass

1359.00.0



Bright chromium

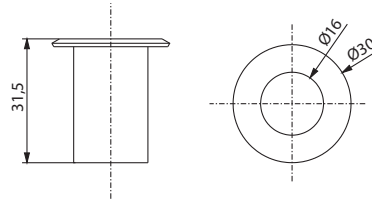
1359.30.0



Matt chromium

1359.31.0

9953



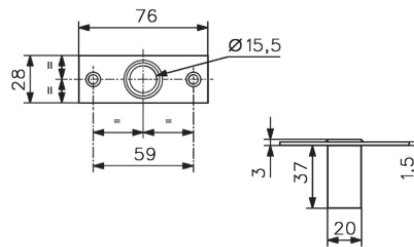
**References**

Tubular keep for series 1358



Bright chromium      Matt chromium  
**9953.30.0**      **9953.31.0**

9954



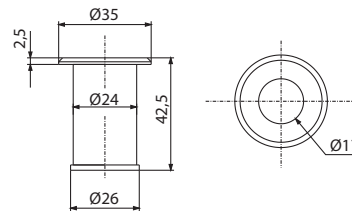
**References**

Keep with anti-dust guard, two fixing holes for locks series 1358



Polished brass      Matt chromium  
**9954.00.0**      **9954.31.0**

9954.\*\*.3



**References**

Keep with anti-dust guard for locks series 1358



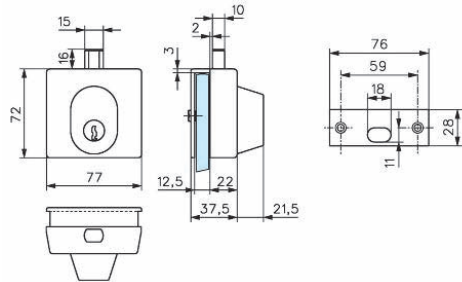
Polished brass      Matt chromium  
**9954.00.3**      **9954.31.3**

### Clip on lock with half euro profile cylinder 1435 and 1436

#### Technical features

- No notches required
- Fixing on edge of door, minimum space 4 mm
- Fixing with 2 screws for series 1435 and 1439
- To match bottom lock series 1358 to provide 2 locking points
- Possibility of combinations with master key except 1436
- Supplied with flat keep and 3 keys

1435



#### References



Bright chromium



Matt chromium



Gold plated

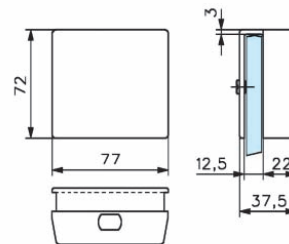
1435.30.0

1435.31.0

1435.40.0

Clip on lock with half euro profile cylinder

1439



#### References



Bright chromium



Matt chromium



Gold plated

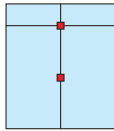
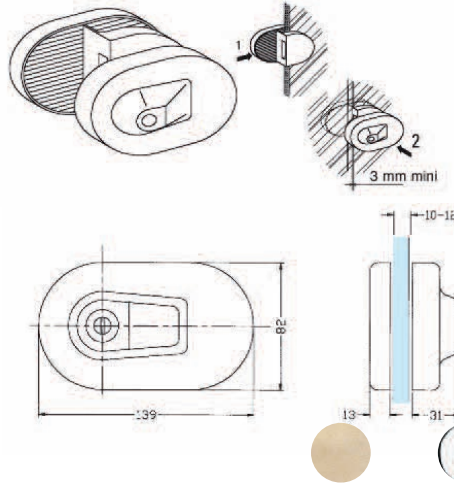
1439.30.0

1439.31.0

1439.40.0

Matching patch keep to fit with series 1435

1436.\*\*.\*



**References**

- Special lock to fix on glass thickness 10 without notches
- Special lock to fix on glass thickness 12 without notches

Polished brass      Bright chromium

<b>1436.00.4</b>	<b>1436.30.4</b>
<b>1436.00.5</b>	<b>1436.30.5</b>

- No notches required
- Fixing on edge of door, minimum space 3 mm
- Provides an additional locking points for double door

S171.\*\*.3



Polished brass      Brushed stainless steel      Polished stainless steel

100 screws for patch hinge series 3272 and 3273

<b>S171.00.3</b>	<b>S171.15.3</b>	<b>S171.16.3</b>
------------------	------------------	------------------

S229.99.4



100 spacers 1 mm thickness for patch hinge series 3272 and 3273

S229.99.6



100 spacers 1,5 mm thickness for patch hinge series 3271 and 3275