

Showcase Hinges - Shopfitting

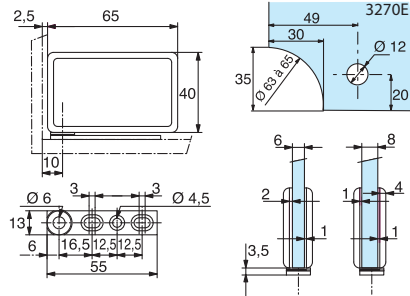
3269.**.0



References

Top and bottom showcase hinges

- For notch 3270E
- Mounted on surface mounted wall plate
- Tightened by plate



Bright chromium



Matt chromium



Gold plated



Lacquered white RAL 9010

3269.30.0

3269.31.0

3269.40.0

3269.51.0

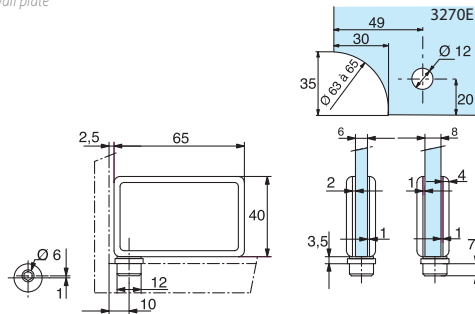
3270.**.0



References

Top and bottom showcase hinges

- For notch 3270E
- With retractable pin for easier assembly
- Tightened by plate
- Mortised pivot with off centre hole for better fit



Bright chromium



Matt chromium



Gold plated



Lacquered white RAL 9010

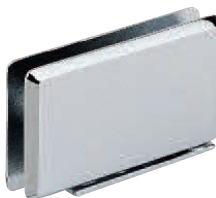
3270.30.0

3270.31.0

3270.40.0

3270.51.0

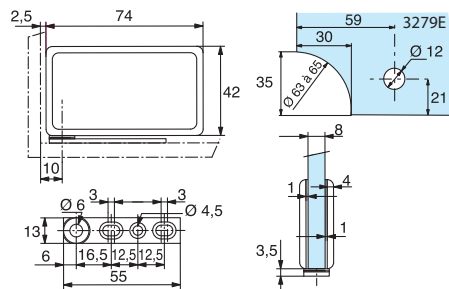
3279.**.0



References

Top and bottom showcase hinges

- For notch 3279E
- Mounted on surface mounted wall plate
- Tightened by plate



Bright chromium



Matt chromium



Gold plated



Lacquered white RAL 9010

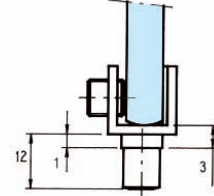
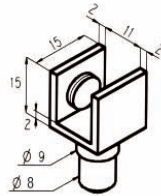
3279.30.0

3279.31.0

3279.40.0

3279.51.0

5630.**.0



References



Pivot clip 15 x 15 mm 11 mm opening

- No notch required
- Used at top and bottom of panel
- Brass profile

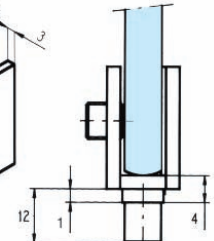
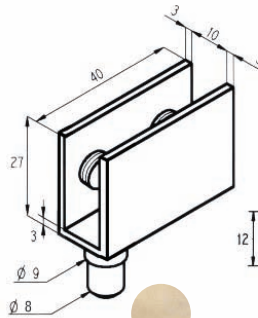
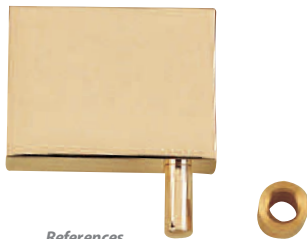
- Tightened with one screw
- Sold in pack of 10



Polished brass Bright chromium Matt chromium

5630.00.0 **5630.30.0** **5630.31.0**

5630.**.1



References



Pivot clip 27 x 40 mm 10 mm opening

- No notch required
- Used at top and bottom of panel
- Brass profile

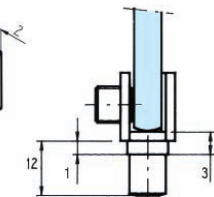
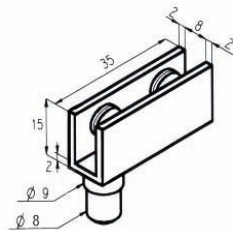
- Tightened with 2 screws
- Sold in pairs : 1 top and bottom clip



Polished brass Bright chromium Matt chromium

5630.00.1 **5630.30.1** **5630.31.1**

5630.**.8



References



Pivot clip 15 x 35 mm 8 mm opening

- No notch required
- Used at top and bottom of panel
- Brass profile

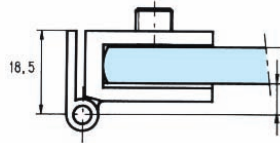
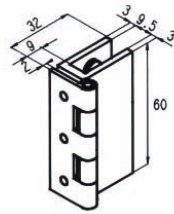
- Tightened with 2 screws
- Sold in pairs : 1 top and bottom clip



Polished brass Bright chromium Matt chromium

5630.00.8 **5630.30.8** **5630.31.8**

5500.**.2



References



60 x 32 mm single clip hinge

- No notch required
- Maximum panel size 130 x 45 cm
- Brass profile and milled stainless steel pin

- Tightened with 3 round end screws
- Sold in pack of 2



Polished brass

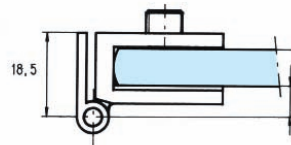
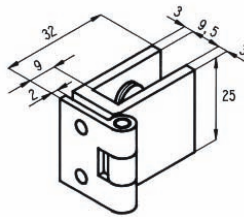
5500.00.2



Bright chromium

5500.30.2

5500.**.3



References



25 x 32 mm single clip hinge

- No notch required
- Maximum panel size 60 x 40 cm
- Brass profile and milled stainless steel pin

- Tightened with 2 round end screws
- Sold in pack of 2



Polished brass

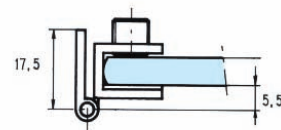
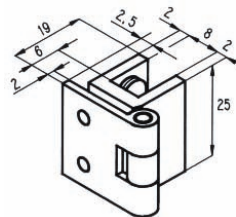
5500.00.3



Bright chromium

5500.30.3

5500.**.4



References



25 x 19 mm single clip hinge

- No notch required
- Maximum panel size 40 x 30 cm
- Brass profile and milled stainless steel pin

- Tightened with 2 round end screws
- Sold in pack of 2



Polished brass

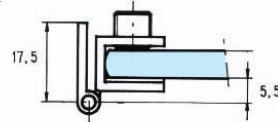
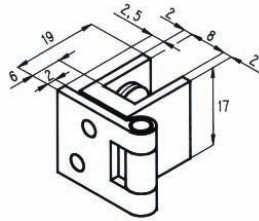
5500.00.4



Bright chromium

5500.30.4

5500.**.5



References

17 x 19 mm single clip hinge

- No notch required
- Maximum panel size 30 x 20 cm
- Brass profile and milled stainless steel pin

- Tightened with 1 round end screw
- Sold in pack of 2



Polished brass

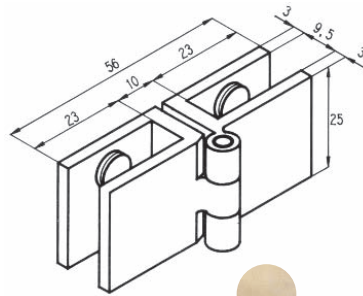


Bright chromium

5500.00.5

5500.30.5

5500.**.0



References

25 x 56 mm double clip hinge

- No notch required
- Maximum panel size 80 x 40 cm
- Brass profile and milled stainless steel pin

- Tightened by 2 round end screws on opposite side to hinge pin
- Sold in pack of 4



Polished brass

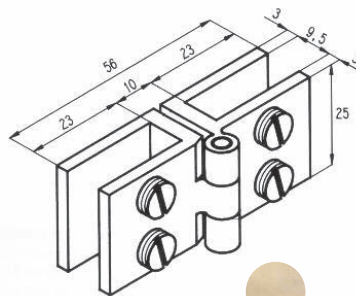


Bright chromium

5500.00.0

5500.30.0

5500.**.1



References

25 x 56 mm double clip hinge

- No notch required
- Maximum panel size 80 x 40 cm
- Brass profile and milled stainless steel pin

- Tightened by 2 round end screws on same side as hinge pin
- Sold in pack of 4



Polished brass

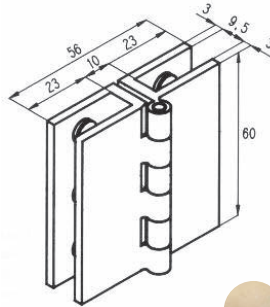


Bright chromium

5500.00.1

5500.30.1

5500.**.8



References



60 x 56 mm double clip hinge

- No notch required
- Maximum panel size 130 x 45 cm
- Brass profile and milled stainless steel pin



Polished brass



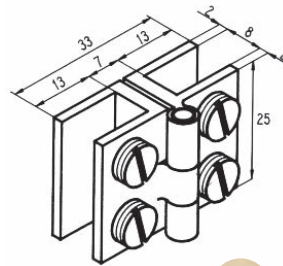
Bright chromium

5500.00.8

5500.30.8

- Tightened by 2 round end screws on opposite side to hinge pin
- Sold per unit

5500.**.6



References



25 x 33 mm double clip hinge

- No notch required
- Maximum panel size 40 x 30 cm
- Brass profile and milled stainless steel pin



Polished brass



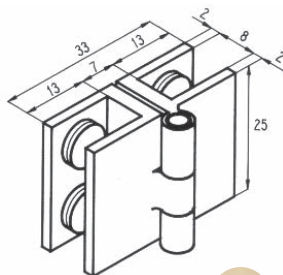
Bright chromium

5500.00.6

5500.30.6

- Tightened by 2 round end screws on same side as hinge pin
- Sold in pack of 4

5500.**.7



References



25 x 33 mm double clip hinge

- No notch required
- Maximum panel size 40 x 30 cm
- Brass profile and milled stainless steel pin



Polished brass



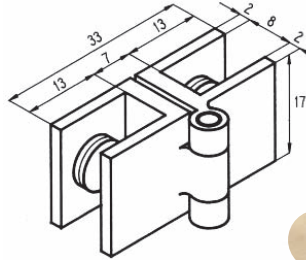
Bright chromium

5500.00.7

5500.30.7

- Tightened by 2 round end screws on opposite side to hinge pin
- Sold in pack of 4

5500.**.9



References



17 x 33 mm double clip hinge

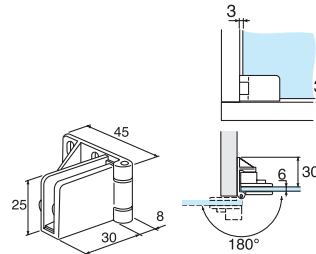
- No notch required
- Maximum panel size 30 x 20 cm
- Brass profile and milled stainless steel pin
- Tightened by 1 round end screw on opposite side to hinge pin
- Sold in pack of 4



Polished brass Bright chromium

5500.00.9 5500.30.9

5501.**.0



References



Single clip hinge with blocking

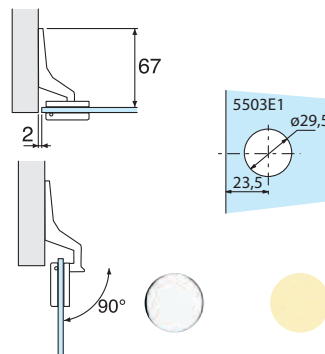
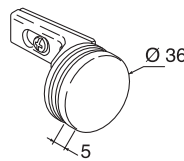
- No notch required
- Blocking in closed position
- Opening through 180°
- Maximum panel size 50 x 30 cm
- Tightened by 1 round end screw
- Sold per pairs (top and bottom hinge).



Bright chromium Gold plated

5501.30.0 5501.40.0

5503.**.1



References



Round single hinge with blocking

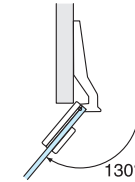
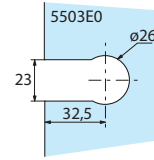
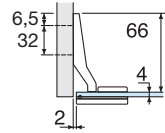
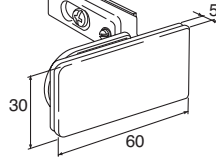
- For notch 5503E1
- Blocking in closed position
- Opening through 90°
- Sold in pairs



Bright chromium Gold plated

5503.30.1 5503.40.1

5503.**.2



Bright chromium

Gold plated

References



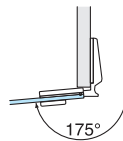
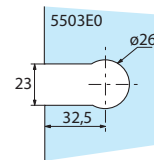
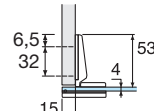
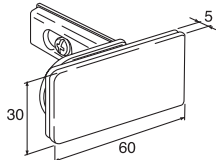
Rectangular hinge with blocking point for inserted panel

5503.30.2

5503.40.2

- For notch 5503E0
- Blocking in closed position
- Opening through 130°
- Sold per pairs

5503.**.4



Bright chromium

Gold plated

References



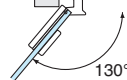
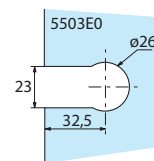
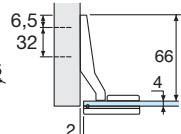
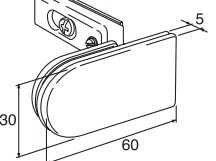
Rectangular hinge with blocking point for overlapping door

5503.30.4

5503.40.4

- For notch 5503E0
- 15 mm overlap
- Blocking in closed position
- Opening through 175°
- Sold in pairs

5503.**.3



Bright chromium

Gold plated

References



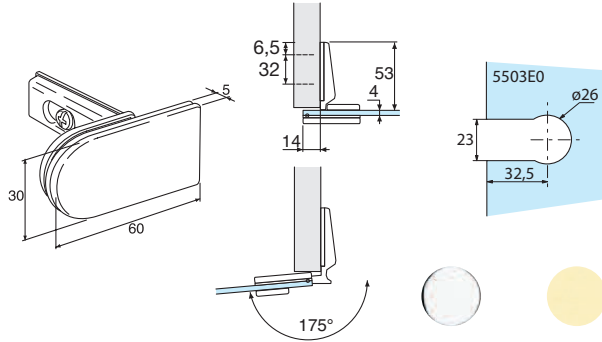
Round hinge with blocking point for inserted panel

5503.30.3

5503.40.3

- For notch 5503E0
- Blocking in closed position
- Opening through 130°
- Sold in pairs

5503.**.5



References



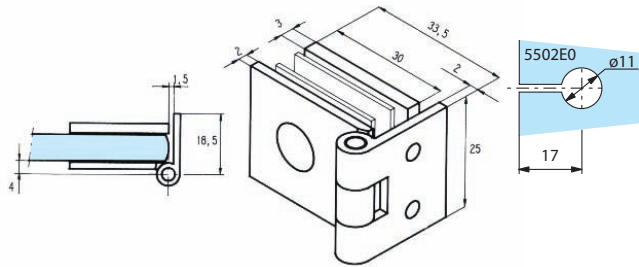
Bright chromium Gold plated

Round hinge with blocking for overlapping door

5503.30.5 **5503.40.5**

- For notch 5503E0
- 15 mm overlap
- Blocking in closed position
- Opening through 175°
- Sold in pairs

5502.**.0



References



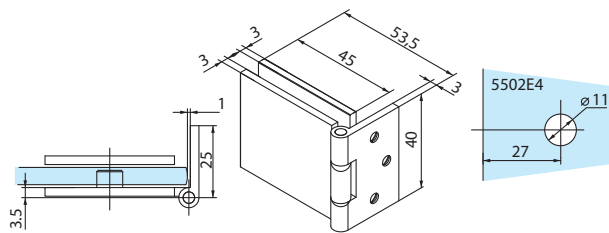
Polished brass Bright chromium Matt chromium

Wall plate hinge 25 x 33.5 mm

5502.00.0 **5502.30.0** **5502.31.0**

- For notch 5502E0
- Brass profile and milled stainless steel pin
- Tightened with 1 reversible tipped screw
- Sold in pack of 2

5502.**.0SQ



References



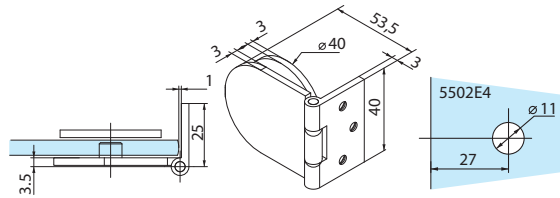
Bright chromium Matt chromium

Square hinge 40 x 54 mm

5502.30.0SQ **5502.31.0SQ**

- For notch 5502E4
- Brass profile and milled stainless steel pin
- Sold in pack of 2

5502.**.0AR



Single hinge rounded 40 x 54 mm

- For notch 5502E4
- Brass profile and milled stainless steel pin

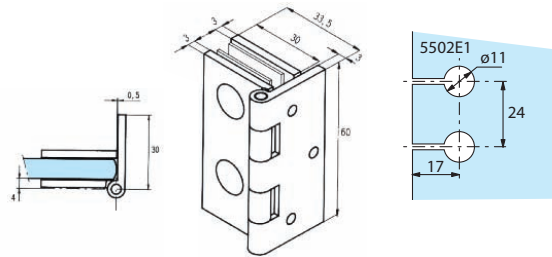
• Sold in pack of 2



Bright chromium Matt chromium

5502.30.0AR 5502.31.0AR

5502.**.2



Wall plate hinge 60 x 33.5 mm

- For notch 5502E1
- Brass profile and milled stainless steel pin

• Tightened with 2 reversible tipped screws

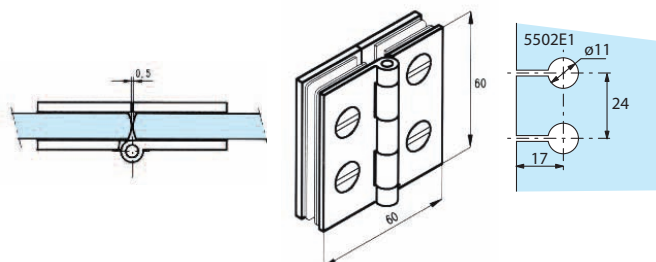
• Sold in pack of 2



Polished brass Bright chromium Matt chromium

5502.00.2 5502.30.2 5502.31.2

5502.**.1



Glass to glass hinge 60 x 60 mm

- For notch 5502E1
- Brass profile and milled stainless steel pin

• Tightened with 2 reversible tipped screws

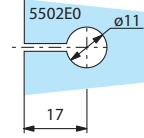
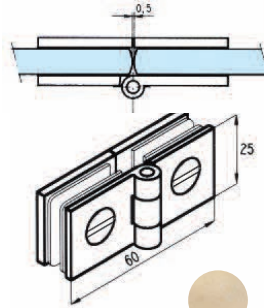
• Sold in pack of 2



Polished brass Bright chromium Matt chromium

5502.00.1 5502.30.1 5502.31.1

5502.**.3



References

Glass to glass hinge 25 x 60 mm

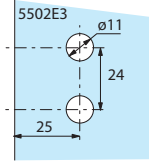
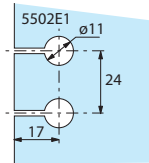
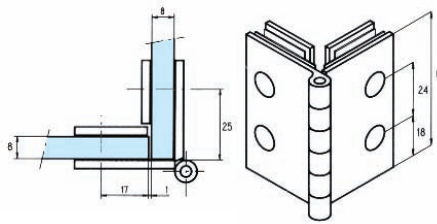
- For notch 5502E0
- Brass profile and milled stainless steel pin

Polished brass Bright chromium Matt chromium

5502.00.3 **5502.30.3** **5502.31.3**

- Tightened with 1 reversible tipped screw
- Sold in pack of 2

5502.**.4



References

Corner hinge 60 x 44 mm

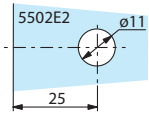
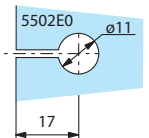
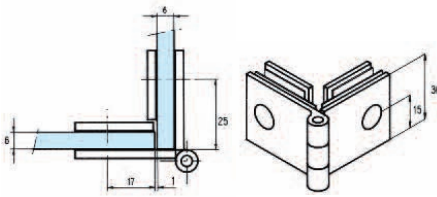
- For notch 5502E3 for fixed panel and 5502E1 for mobile panel
- Brass profile and milled stainless steel pin

Polished brass Bright chromium Matt chromium

5502.00.4 **5502.30.4** **5502.31.4**

- Tightened with 2 reversible tipped screws
- Sold per unit

5502.**.5



References

Corner hinge 30 x 44 mm

- For notch 5502E2 for fixed panel and 5502E0 for mobile panel
- Brass profile and milled stainless steel pin

Polished brass Bright chromium Matt chromium

5502.00.5 **5502.30.5** **5502.31.5**

- Tightened with 1 reversible tipped screws
- Sold in pack of 2