

Stacking Door Systems - Sliding Doors



Stacking door systems

 **Stremmer**
ASSA ABLOY

FLEXYSTACK 250 FLEXIROL

The FLEXYSTACK 250 / FLEXIROL system consists of a mobile partition comprising suspended panels.

Without floor guide, the system is suitable for both internal and external partitions. Each panel is placed manually into its storage position so that the entire bay can be opened up.

The panels can be stored in such a way that they are out of sight or even stored in a separate location, without obstructing the entrance.

FLEXYSTACK 250 is a stacking door system, up to 250 kgs per panel, the track profile has an aesthetic design, the wheels of the stainless steel hangers are covered with a noise reducing material.

FLEXIROL is a heavier system, up to 500 kgs per panel, the heavier track profile is combined with larger hangers.

Technical features

FLEXYSTACK 250

- Maximum weight 250 kg per panel
- Maximum door height 3000 mm
- For glass thickness 10 mm and 12 mm, no glass preparation required

FLEXIROL

- Maximum weight 500 kg per panel
- Maximum door height 4000 mm
- For glass thickness 10 mm and 12 mm, no glass preparation required

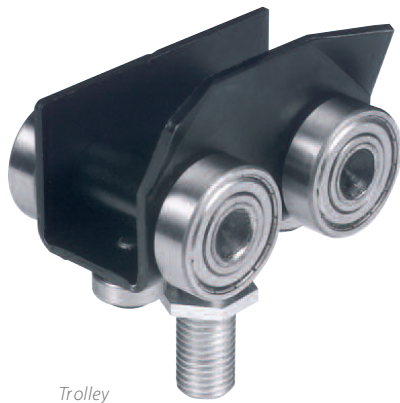
**Remark : limited door sizes
for swing/sliding doors
is 1000 x 2400 mm**



PREFIT

FITTINGS FOR GLASS

Stacking Door Systems - Sliding Doors



Trolley

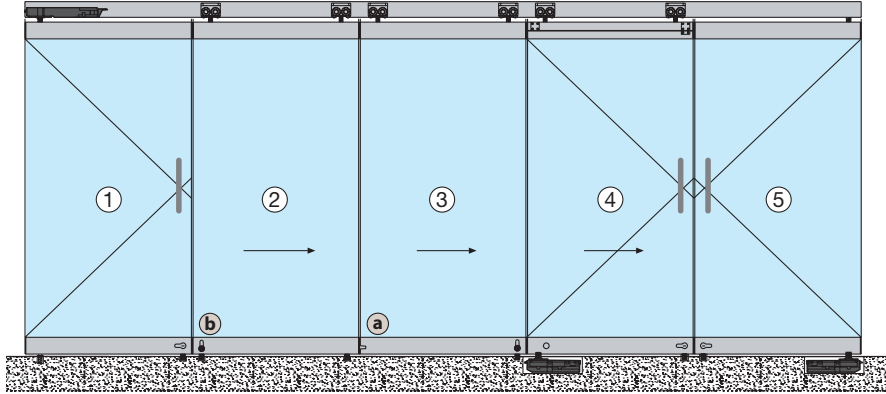


Panel diverter

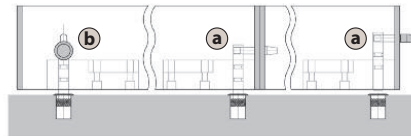
PREFIT

FITTINGS FOR GLASS

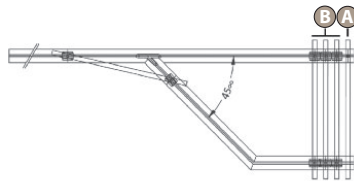
Stacking Door Systems - Sliding Doors



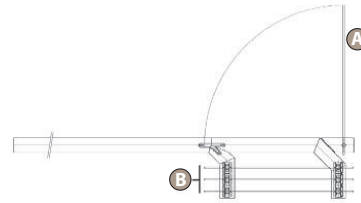
Locking : different possibilities



The 90° degree stacking arrangement



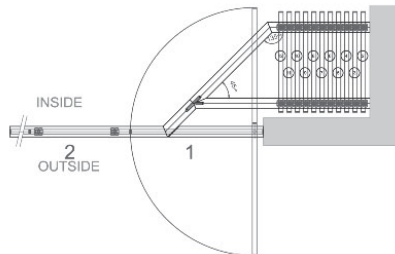
Panels are stacked at a right angle with the main profile.



Panels are stacked parallel with the main profile.

A Fixed swing door on floor closer or on a free swing pivot.

B Sliding panels.



Panels are stacked behind a wall. First panel is a swing door.

A solution for all situations !

PREFIT

FITTINGS FOR GLASS

Stacking Door Systems - Sliding Doors



Cross section (sliding panel) FLEXYSTACK 250

